



## REQUEST FOR QUOTATION (RFQ)

RFQ NO. 2195

### BID DESCRIPTION

**SUPPLY, DELIVERY OF A SURGE ANTICIPATION VALVE & INSTALLATION OF THE PIPEWORKS FOR NAHOON TREATMENT WORKS**

### CLOSING DATE

**12 DECEMBER 2022 AT 11H00AM**

**NO EMAILED SUBMISSION WILL BE ACCEPTED**

### BIDDER TO COMPLETE

COMPANY NAME	
CSD NUMBER	

ISSUED AND PREPARED BY: AMATOLA WATER

PRIVATE BAG X3

VINCENT

5217

Tel: +27 43 707 3700

<b>TABLE OF CONTENTS</b>	
<b>SECTION A: TENDER INVITATION, CONDITIONS OF TENDER AND SPECIFICATION</b>	<b>PAGE NO</b>
INVITATION TO BID (SBD 1)	4
TENDER CONDITIONS	8
BID SPECIFICATION	12
<b>SECTION B: RETURNABLE DOCUMENTS</b>	<b>PAGE NO</b>
FORM A: AUTHORITY TO SIGN	14
FORM B: SCHEDULE OF PREVIOUS SIMILAR CONTRACTS SATISFACTORILY	15
FORM B.1: CONFIRMATION OF REFERENCES TO AMATOLA WATER	16
FORM B.2: CONFIRMATION OF REFERENCES TO AMATOLA WATER	17
SBD 4 DECLARATION: CONFLICT OF INTEREST	18
SBD 6.1 PREFERENCE POINTS CLAIM FORM	21
SBD 6.2 DECLARATION CERTIFICATE FOR LOCAL PRODUCTION AND CONTENT	26
<b>SECTION C: PRICING INSTRUCTIONS, PRICING SCHEDULE AND CONTRACT</b>	<b>PAGE NO</b>
PRICING INSTRUCTIONS	34
SBD 3.1 PRICING SCHEDULE - FIRM PRICES (PURCHASES)	35
SBD 7.1 CONTRACT FORM – GOODS/ WORKS	37
TECHNICAL SPECIFICATION	39
GENERAL CONDITIONS OF CONTRACT	41

## **SECTION A**

# **TENDERING INVITATION, CONDITIONS OF TENDER AND SPECIFICATION**

## INVITATION TO BID

**YOU ARE HEREBY INVITED TO BID FOR SUPPLY, DELIVERY OF A SURGE ANTICIPATION VALVE & INSTALLATION OF THE PIPEWORKS FOR NAHOON TREATMENT WORKS**

BID NUMBER:	RFQ: 2195	CLOSING DATE:	12 December 2022	CLOSING TIME:	11:00am
-------------	--------------	------------------	------------------	------------------	---------

**THE SUCCESSFUL BIDDER WILL BE REQUIRED TO FILL IN AND SIGN A WRITTEN CONTRACT FORM (SBD7).**

**BID RESPONSE DOCUMENTS MUST BE DEPOSITED IN THE BID BOX LISTED BELOW**

**Reception area of Amatola House**

**6 Lancaster Road**

**Vincent**

**East London**

**THE RFQ BOX IS AVAILABLE FOR BIDS TO BE DEPOSITED BETWEEN 08:00AM – 16:00PM FROM MONDAY TO FRIDAY.**

**SUPPLIER INFORMATION**

NAME OF BIDDER					
POSTAL ADDRESS					
STREET ADDRESS					
TELEPHONE NUMBER	CODE		NUMBER		
CELLPHONE NUMBER					
FACSIMILE NUMBER	CODE		NUMBER		
E-MAIL ADDRESS					
VAT REGISTRATION NUMBER					
	TCS PIN:		OR	CSD No:	
B-BBEE STATUS LEVEL VERIFICATION CERTIFICATE [TICK APPLICABLE BOX]	<input type="checkbox"/> Yes  <input type="checkbox"/> No		B-BBEE STATUS LEVEL SWORN AFFIDAVIT	<input type="checkbox"/> Yes  <input type="checkbox"/> No	
IF YES, WHO WAS THE CERTIFICATE ISSUED BY?					
AN ACCOUNTING OFFICER AS CONTEMPLATED IN THE CLOSE CORPORATION ACT (CCA) AND NAME THE APPLICABLE IN THE TICK BOX	<input type="checkbox"/>  <input type="checkbox"/>  <input type="checkbox"/>	AN ACCOUNTING OFFICER AS CONTEMPLATED IN THE CLOSE CORPORATION ACT (CCA)  A VERIFICATION AGENCY ACCREDITED BY THE SOUTH AFRICAN ACCREDITATION SYSTEM (SANAS)  A REGISTERED AUDITOR NAME:			
<b>[A B-BBEE STATUS LEVEL VERIFICATION CERTIFICATE/SWORN AFFIDAVIT (FOR EMEs &amp; QSEs) MUST BE SUBMITTED IN ORDER TO QUALIFY FOR PREFERENCE POINTS FOR B-BBEE]</b>					
ARE YOU THE ACCREDITED REPRESENTATIVE	<input type="checkbox"/> Yes  <input type="checkbox"/> No		ARE YOU A FOREIGN BASED	<input type="checkbox"/> Yes	

<b>IN SOUTH AFRICA FOR THE GOODS /SERVICES /WORKS OFFERED?</b>	[IF YES ENCLOSE PROOF]	<b>SUPPLIER FOR THE GOODS /SERVICES /WORKS OFFERED?</b>	<input type="checkbox"/> No [IF YES ANSWER PART B:3 BELOW]
<b>SIGNATURE OF BIDDER</b>	.....	<b>DATE</b>	
<b>CAPACITY UNDER WHICH THIS BID IS SIGNED (Attach proof of authority to sign this bid; e.g. resolution of directors, etc.)</b>			
<b>TOTAL NUMBER OF ITEMS OFFERED</b>			
<b>TOTAL BID PRICE (ALL INCLUSIVE)</b>			
<b>BIDDING PROCEDURE AND SCM ENQUIRIES MAY BE DIRECTED TO: Ms M. Matshikwe</b>		<b>TECHNICAL INFORMATION MAY BE DIRECTED TO: Mr U. Kewana</b>	
<b>ONLY WRITTEN QUERIES VIA EMAIL WILL BE ATTENDED TO</b>			
<b>PUBLIC ENTITY</b>	AMATOLA WATER		
<b>CONTACT PERSON</b>	Ms M. Matshikwe Senior Buyer	<b>CONTACT PERSON</b>	Mr U. Kewana Project Manager
<b>E-MAIL ADDRESS</b>		<b>E-MAIL ADDRESS</b>	
<a href="mailto:mmatshikwe@amatolawater.co.za">mmatshikwe@amatolawater.co.za</a>		<a href="mailto:ukewana@amatolawater.co.za">ukewana@amatolawater.co.za</a>	

**PART B**  
**TERMS AND CONDITIONS FOR BIDDING**

**1. BID SUBMISSION:**

- 1.1. BIDS MUST BE DELIVERED BY THE STIPULATED TIME TO THE CORRECT ADDRESS. LATE BIDS WILL NOT BE ACCEPTED FOR CONSIDERATION.
- 1.2. **ALL BIDS MUST BE SUBMITTED ON THE OFFICIAL FORMS PROVIDED – (NOT TO BE RE-TYPED) OR ONLINE**
- 1.3. **BIDDERS MUST REGISTER ON THE CENTRAL SUPPLIER DATABASE (CSD) TO UPLOAD MANDATORY INFORMATION NAMELY: (BUSINESS REGISTRATION/ DIRECTORSHIP/ MEMBERSHIP/IDENTITY NUMBERS; TAX COMPLIANCE STATUS; AND BANKING INFORMATION FOR VERIFICATION PURPOSES). B-BBEE CERTIFICATE OR SWORN AFFIDAVIT FOR B-BBEE MUST BE SUBMITTED TO BIDDING INSTITUTION.**
- 1.4. **WHERE A BIDDER IS NOT REGISTERED ON THE CSD, MANDATORY INFORMATION NAMELY: (BUSINESS REGISTRATION/ DIRECTORSHIP/ MEMBERSHIP/IDENTITY NUMBERS; TAX COMPLIANCE STATUS MAY NOT BE SUBMITTED WITH THE BID DOCUMENTATION. B-BBEE CERTIFICATE OR SWORN AFFIDAVIT FOR B-BBEE MUST BE SUBMITTED TO BIDDING INSTITUTION.**
- 1.5. THIS BID IS SUBJECT TO THE PREFERENTIAL PROCUREMENT POLICY FRAMEWORK ACT 2000 AND THE PREFERENTIAL PROCUREMENT REGULATIONS, 2017, THE GENERAL CONDITIONS OF CONTRACT (GCC) AND, IF APPLICABLE, ANY OTHER LEGISLATION OR SPECIAL CONDITIONS OF CONTRACT.

**2. TAX COMPLIANCE REQUIREMENTS**

- 2.1 BIDDERS MUST ENSURE COMPLIANCE WITH THEIR TAX OBLIGATIONS.
- 2.2 BIDDERS ARE REQUIRED TO SUBMIT THEIR UNIQUE PERSONAL IDENTIFICATION NUMBER (PIN) ISSUED BY SARS TO ENABLE THE ORGAN OF STATE TO VIEW THE TAXPAYER'S PROFILE AND TAX STATUS.
- 2.3 APPLICATION FOR TAX COMPLIANCE STATUS (TCS) OR PIN MAY ALSO BE MADE VIA E-FILING. IN ORDER TO USE THIS PROVISION, TAXPAYERS WILL NEED TO REGISTER WITH SARS AS E-FILERS THROUGH THE WEBSITE [WWW.SARS.GOV.ZA](http://WWW.SARS.GOV.ZA).
- 2.4 BIDDERS MAY ALSO SUBMIT A PRINTED TCS TOGETHER WITH THE BID.
- 2.5 IN BIDS WHERE CONSORTIA / JOINT VENTURES / SUB-CONTRACTORS ARE INVOLVED, EACH PARTY MUST SUBMIT A SEPARATE PROOF OF TCS / PIN / CSD NUMBER.
- 2.6 WHERE NO TCS IS AVAILABLE BUT THE BIDDER IS REGISTERED ON THE CENTRAL SUPPLIER DATABASE (CSD), A CSD NUMBER MUST BE PROVIDED.

### 3. QUESTIONNAIRE TO BIDDING FOREIGN SUPPLIERS

- 3.1. IS THE BIDDER A RESIDENT OF THE REPUBLIC OF SOUTH AFRICA (RSA)?  
☐ YES ☐ NO
- 3.2. DOES THE BIDDER HAVE A BRANCH IN THE RSA?  
☐ YES ☐ NO
- 3.3. DOES THE BIDDER HAVE A PERMANENT ESTABLISHMENT IN THE RSA?  
☐ YES ☐ NO
- 3.4. DOES THE BIDDER HAVE ANY SOURCE OF INCOME IN THE RSA?  
☐ YES ☐ NO

**IF THE ANSWER IS “NO” TO ALL OF THE ABOVE, THEN, IT IS NOT A REQUIREMENT TO OBTAIN A TAX COMPLIANCE STATUS / TAX COMPLIANCE SYSTEM PIN CODE FROM THE SOUTH AFRICAN REVENUE SERVICE (SARS) AND IF NOT REGISTER AS PER 2.3 ABOVE.**

**NB: FAILURE TO PROVIDE ANY OF THE ABOVE PARTICULARS MAY RENDER THE BID INVALID.**

## **TENDER CONDITIONS**

### **1. DEFINITIONS**

The word "Bidder/Tenderer" in these conditions shall mean and include any firm of Contractors, Suppliers, Service Providers or any company or body incorporated or unincorporated.

### **2. BID PUBLICATION**

RFQ document will be available from **05 December 2022** at Amatola Water website at [www.amatolawater.co.za](http://www.amatolawater.co.za).

### **3. BID SUBMISSION**

The original completed bid documents must be submitted in a sealed envelope endorsed with the Bid Number and Bid Description as detailed in the Tender Data. The sealed envelope must be deposited in the Bid/Tender Box, located in the reception area of Amatola House, 6 Lancaster Road, Vincent, East London, not later than the time and date specified on the cover page and SBD 1 of this bid.

### **4. RFQ Evaluation Criteria**

**This bid will be evaluated in Four (4) phases:**

Phase One: Mandatory requirements

Phase Two: Local Production and Content

Phase Three: Functionality Scoring

Phase Four: Bidders passing all stages above will thereafter be evaluated on PPPFA

#### **Phase One: Mandatory Requirements**

- Bidders' proposals must meet the following minimum requirements and the required supporting documents must be submitted with the completed quotation document, non-erasable ink, no tippex or correctional fluid used in a sealed envelope in the bid box at the closing date and time. Failure to comply will automatically eliminate the bid for further consideration:
- Bids must be submitted in its original format and bids which are late or submitted by facsimile will not be accepted.
- **Bidders must be registered as 1ME with the Construction Industry Development Board (CIDB)**
- FORM A: AUTHORITY TO SIGN - must be fully completed and signed
- FORM B: SCHEDULE OF PREVIOUS SIMILAR CONTRACTS SATISFACTORILY COMPLETED
- FORM B.1: CONFIRMATION OF REFERENCE TO AMATOLA WATER – for similar projects previously completed by the bidding company, Form must be completed and stamped
- FORM B.2: CONFIRMATION OF REFERENCE TO AMATOLA WATER - for similar projects previously completed by the bidding company, Form must be completed and stamped
- SBD1: INVITATION TO BID – must be completed and signed.
- SBD4: BIDDERS DISCLOSURE - must be completed and signed.
- SBD 3.1: PRICING SCHEDULE - Firm Prices – must be completed.
- If the Bid Sum (amount in words) as per the SBD.1 differs from the SBD 3.1, it will automatically invalidate the offer submitted.



### **Phase Two: Local Production and Content (Applicable)**

- On the Local content designated items, only locally produced goods or services with a stipulated minimum threshold for local content production and content of 70% will be considered.
- The relevant designated sector: Valves, The minimum threshold for local content :70%
- Failure to indicate minimum percentage (70%) or not meeting minimum percentage for local content will automatically invalidate the bid for further consideration.
- Bidders must complete SBD 6.2 (DECLARATION CERTIFICATE FOR LOCAL PRODUCTION AND CONTENT) with annexure C, and it must be submitted with the bid at the closing date and time. Failure to submit will invalidate the bid.

### **Phase Three: Functionality Scoring (Applicable)**

The contractor should have experience in the following areas

- Steel pipelines of minimum diameter DN150mm. A completion certificate of one such project to be submitted.
- Their technical staff (Site Supervisor) must have at least 3 years' experience installing steel pipelines and valves.
- CV of that person to be submitted.

### **Phase Four: EVALUATION ON PPPFA**

**THE PREFERENTIAL PROCUREMENT POLICY FRAMEWORK ACT WILL BE APPLIED AND 80/20 BBBEE POINTS SYSTEM WILL BE APPLICABLE**

<b>POINTS FOR PRICE</b>	<b>- 80 POINTS</b>
<b>MAXIMUM POINTS FOR BBBEE</b>	<b>- 20 POINTS</b>
<b>TOTAL POINTS</b>	<b>- 100 POINTS</b>

### **OTHER CONDITIONS OF THE BID (Non- eliminating)**

- The bidders must be registered on Central Supplier Database (CSD) prior the award.
- Bidders tax matters must be in order prior award.
- A valid original or certified copy of **B-BEEE Certificate** from a verification agency accredited by SANAS must be submitted with the bid or a valid original or certified copy of **Sworn Affidavit** attested by a commissioner of Oaths prepared and issued in terms of the amended B-BBEE Construction Sector Codes. Failure to comply, will automatically results in non-awarding of points for B-BBEE.
- JOINT VENTURE AGREEMENT (If Applicable).
- SBD 6.1 should be completed and signed.

***The lowest or any bid will not necessarily be accepted, and your bid may be accepted in part or as a whole.***

- Bid documents must be submitted in a sealed envelope marked **"RFQ 2195" – SUPPLY, DELIVERY OF A SURGE ANTICIPATION VALVE & INSTALLATION OF THE PIPEWORKS FOR NAHOON TREATMENT WORKS**. Failure to submit your bid in a sealed envelope will render your bid non-responsive.

### **5. PERIOD OF VALIDITY FOR BIDS AND WITHDRAWAL OF BID AFTER CLOSING DATE**

All Bids must remain valid for a period of 90 (ninety) days from the closing date as stipulated in the Bid document.

## **6. AUTHORITY TO SIGN BID DOCUMENTS**

In the case of a Bid being submitted on behalf of a company, close corporation or partnership, evidence must be submitted to the Amatola Water at the time of submission of the Bid that the Bid has been signed by persons properly authorised thereto by resolution of the directors or under the articles of the entity.

**Form A must be completed. Failure to complete Form A will invalidate your bid.**

## **7. JOINT VENTURE REQUIREMENTS**

**DEFINITION:- “Joint Venture or Consortium”:** means an association of persons for the purpose of combining their expertise, property, capital, efforts, skill and knowledge in an activity for the execution of a contract.

Should a group of companies/firms and/or interested parties wish to enter into a joint venture / consortium agreement the following minimum requirements must be met: -

- a. A properly signed copy of the joint venture/consortium agreement must be attached.
- b. Each member of the joint venture/consortium's taxes must be in order.
- c. After the award of a contract to a joint venture/consortium, the successful joint venture group or consortium must provide a combined joint venture/consortium Tax Clearance Certificate.
- d. After the award of a contract to a joint venture/consortium, the successful joint venture group or consortium must provide the details of the joint venture / consortium banking details.
- e. A trust, consortium or joint venture will qualify for points of their B-BBEE status level as a legal entity, provided that the entity submits their B-BBEE status level certificate.
- f. A trust, consortium or joint venture will qualify for points for their B-BBEE status level as an unincorporated entity, provided that the entity submits their consolidated B-BBEE scorecard as if they were a group structure and that such a consolidated B-BBEE scorecard is prepared for every separate tender.

### **THE JOINT VENTURE/CONSORTIUM AGREEMENT MUST CONTAIN THE FOLLOWING: -**

- a. Who the managing member will be.
- b. Who the signatory of authority will be.
- c. How the joint venture/consortium share of profit will be split.
- d. The bank account details where payments will be deposited into.
- e. The agreement must be signed by all parties.
- f. The agreement must be certified by a Commissioner of Oaths.
- g. The postal and physical address where all correspondence will be sent to

## **8. CONDITIONS OF TENDER**

- I. Submission of this proposal signifies the applicant's acceptance of the conditions as laid down in this document, unless clearly stated otherwise.
- II. Any expense incurred by the applicant in preparing and submitting this proposal will be for the applicant's account.
- III. Amatola Water reserves the right not to accept any proposal and cancel the bid as and when the need arises.
- IV. The contractor must provide references on Form B that the company has undertaken projects of a similar nature.
- V. Failure to comply with the above requirements will result in submitted proposals being disqualified.

**Additional RFQ Condition**

RFQ documents must be submitted intact, and no portion of the document may be detached, loose submissions will be rejected, and the bidder will be disqualified.

## **BID SPECIFICATION**

Amatola Water invites quotations from suitably qualified and experienced service providers for the **SUPPLY, DELIVERY OF A SURGE ANTICIPATION VALVE & INSTALLATION OF THE PIPEWORKS FOR NAHOON TREATMENT WORKS.**

### **BACKGROUND**

*Amatola Water is an Eastern Cape based state-owned water services utility (water board), established in 1997, in terms of the Water Services Act. Its prime function is to provide bulk water and sanitation services to water sector institutions, water service authorities and other customers as provided for in the South African water services legislation. Amatola Water's service area includes Buffalo City, the Amathole District and portions of adjoining districts in the central Eastern Cape.*

### **1. SCOPE OF WORK**

#### **SUPPLY, DELIVERY OF A SURGE ANTICIPATION VALVE & INSTALLATION OF THE PIPEWORKS FOR NAHOON TREATMENT WORKS**

## **TECHNICAL SPECIFICATION**

### **A1**

#### **PIPEWORK**

##### **A1.1 Pipes and Fittings**

##### **A1.1.1 Steel Pipe – General Duties**

Steel pipes for general non-corrosive, non-abrasive duties for liquid, air and gas shall be as follows:

Up to DN 150 -SANS 62 medium class. Over DN 150 - SANS 719.

Unless otherwise specified, steel pipework and fittings shall be hot dip galvanised and not painted. Identification bands and arrows as per SANS 10140 will be utilized.

No site welding after hot dip galvanising i.e., if changes are required to hot dip galvanised pipework or a fitting it must hot dip galvanised again (spray on or cold applied repairs are not acceptable)

All bolts to be used must be only hot dip galvanised bolts i.e., no electroplated, electro-galvanised or electroplated bolts

##### **A1.1.2 Steel Pipework – Design**

Pipework up to DN 600 shall be in accordance with SANS 1476. Pipework for the conveyance of water shall, in addition, comply with CCT-WS 11 Standard Specification for Steel Pipe, Fittings and Specials.

Stainless Steel Pipework Stainless steel pipework shall be to ASTM 312. Schedule 10 pipes and fittings shall be used except where otherwise specified.

##### **A1.1.4 Butt Weld Fittings**

Steel butt welding pipe fittings shall be to ANSI B 16.9, BS 1965 or BS 1640 of the same schedule as the pipework or heavier. Butt weld fittings in stainless steel shall be to ASA B 36.19 for schedule 5S and 10S and ASA B 16.9 for schedule 40S and 80S. Alternatively, fittings may be to BS 1640.

##### **A1.1.5 Malleable Cast Iron**

Malleable cast iron fittings shall be to SANS 14.

### **A1.1.6 Cast Iron**

Cast iron pipes and fittings shall comply with BS 2035 (Class D) and shall be pressure tested in accordance with Clause 12 of that Standard. The requirements of the Standard's Clause 6 regarding freedom from defects and casting appearance and Clauses 8, 9 and 10 regarding casting accuracy will be strictly applied. The requirements of the Standard with regard to protection and flanges shall be modified to comply with this Specification. Also refer to Clause "Castings" of this Specification.

### **A1.1.7 Pipework Design, Pipe Type and Material**

The type and material of pipe to be used will be given in the Detailed Mechanical Specification.

### **A1.1.9 Coupling Arrangement**

Screwed fittings may be used on DN 220 and smaller provided that sufficient unions or flanges are provided for disassembly and removal of equipment. Reducing sockets and reducing bushes shall be used where required. All steel pipes larger than DN 220 shall be flanged or fitted with mechanical pipe couplings as applicable. Suitable pipe couplings shall be incorporated wherever necessary to facilitate maintenance or isolate vibration. A coupling shall be provided on each pump suction. Couplings shall be adequately restrained by harnesses as specified in the Clause "Pipe Couplings".

## **A1.2 Pipework Installation**

### **A1.2.1 Appearance**

Pipes and fittings shall be conservatively selected to suit the application, neatly installed, straight to line and level, adequately supported and shall operate without vibration.

### **A1.2.2 Valve Orientation**

On sludge or raw flood water pipelines, check valves shall, wherever possible, be mounted horizontally and isolating valves with spindles vertical. Valve handwheels shall be arranged so that they are accessible to the operators.

### **A1.2.3 Supports**

Proposed designs of pipe supports shall be submitted to the Engineer for acceptance prior to manufacture. Specific requirements are:

- (a) Steel supports shall be fabricated from heavy duty hot-rolled steel sections. The complete assembly shall be hot-dip galvanised after all fabrication is completed.
- (b) Welds shall be "all-round".
- (c) Each foot shall feature at least four anchor fasteners.
- (d) For cantilevered pipe supports, the spacing between anchor fasteners shall be not less than one third of the cantilevered length

The spacing between pipe supports shall be as follows: **APPROXIMATE DISTANCE BETWEEN SUPPORTS FOR STEEL PIPE**

<b>Pipe Diameter (DN)</b>	<b>Distance Between Supports (mm)</b>
0 – 15	800
20 – 50	1 500
65 – 100	2 500
125 – 200	3 500
250 – 500	5 000
> 500	6 000

Distance between supports must be halved for pipe materials other than carbon steels and stainless steels.

- 150mm diameter Surge Anticipation Control Valve & Pipework PN40, off-line and hydraulically operated.
- Scour valve roof, pipework for connection of scour outlet
- Pipework verification and installation (pipe have already been supplied by AW)

**For more information, please contact Mr U. Kewana**

**e-mail:** [ukewana@amatolawater.co.za](mailto:ukewana@amatolawater.co.za)

**NB: DELIVERY & INSTALLATION ADDRESS: AMATOLA WATER, NAHOON DAM WATER TREATMENT WORKS**

## **SECTION B**

### **RETURNABLE DOCUMENTS**

**THE FOLLOWING DOCUMENTS MUST BE COMPLETED IN FULL AND SUBMITTED WITH THIS BID:**

**SBD 1: INVITATION TO BID**

**SBD 4: BIDDER'S DECLARATION**

**SBD 6.1: PREFERENCE POINTS CLAIM FORM IN TERMS OF THE PREFERENTIAL PROCUREMENT REGULATIONS 2017**

**SBD 6.2: DECLARATION CERTIFICATE FOR LOCAL PRODUCTION AND CONTENT**

**THE FOLLOWING DOCUMENTS MUST BE SUBMITTED WITH THIS BID:**

**FORM A: AUTHORITY TO SIGN**

**FORM B: SCHEDULE OF PREVIOUS SIMILAR CONTRACTS SATISFACTORILY CARRIED OUT BY THE TENDERER**

**FORM B.1 CONFIRMATION OF REFERENCES TO AMATOLA WATER**

**FORM B.2 CONFIRMATION OF REFERENCES TO AMATOLA WATER**

**B-BBEE VERIFICATION CERTIFICATE**

**JOINT VENTURE AGREEMENT (IF APPLICABLE)**

## **FORM A: AUTHORITY TO SIGN DOCUMENTS**

The person listed below are duly authorised/ delegated to sign all documents in connection with the tender offer and any contract resulting from it on our behalf by virtue of the Articles of Association/Resolution of the Board of Directors.

Details of authorised/ delegated person

**NAME**

**SIGNATURE**

**DATE**

**WITNESSES:**

1.

**NAME**

**SIGNATURE**

**DATE**

2.

**NAME**

**SIGNATURE**

**DATE**



**FORM B: SCHEDULE OF PREVIOUS RELATED CONTRACTS SATISFACTORILY CARRIED OUT BY THE TENDERER**

Suppliers should very briefly describe their experience in this regard by completing the schedule below thereby providing details of at **least two (2) comparable contracts** within the last 5 years relating to the **SUPPLY, DELIVERY & INSTALLATION OF A DN150 STEEL PIPELINE AND VALVES**. Please note that Form B.1 and B.2 must be completed and stamped by your previous clients in substantiating the list of references provided below and must be submitted as part of this document, failure to do so will lead to disqualification. Please note that references provided may be verified.

Previous Comparable Contracts of the bidding entity within the last 5 years	Short Description	Contract Value (incl. VAT)	Dates (Commencement; Completion)	Client and contactable reference (include phone no.& email addresses)

**SIGNED ON BEHALF OF TENDERER:** .....

## FORM B.1: CONFIRMATION OF REFERENCES TO AMATOLA WATER

NAME OF BIDDING COMPANY:	
PREVIOUS CLIENT/EMPLOYER NAME:	
TENDER/BID NUMBER OF COMPLETED CONTRACT/PROJECT	
DESCRIPTION OF CONTRACT/ PROJECT PREVIOUSLY COMPLETED	
VALUE OF WORK COMPLETED	
DURATION AND DATE COMPLETED:	

The above-mentioned Bidding Company is in the process of submitting a Bid/RFQ for **RFQ NO: 2195 - SUPPLY, DELIVERY OF A SURGE ANTICIPATION VALVE & INSTALLATION OF THE PIPEWORKS FOR NAHOON TREATMENT WORKS** for Amatola Water. If your company had prior exposure with the Bidding Company, as part of the evaluation process for this bid, Amatola Water requires your company to confirm goods/services supplied by the above Bidding Company as per below questionnaire.

1. Were the goods/ services supplied according to the required quality as per the description/specification and were delivered on time?	Select applicable rating <input type="checkbox"/> <b>Excellent,</b> <input type="checkbox"/> <b>Good,</b> <input type="checkbox"/> <b>Satisfactory,</b> <input type="checkbox"/> <b>Poor</b>
2. Kindly, indicate their overall performance on the project.	Select applicable rating <input type="checkbox"/> <b>Excellent,</b> <input type="checkbox"/> <b>Good,</b> <input type="checkbox"/> <b>Satisfactory,</b> <input type="checkbox"/> <b>Poor</b>

Full Name of Authorised Signatory .....

Contact Number ..... Email address.....

Signature..... Date.....

### \*CLIENT (EMPLOYER) STAMP HERE

*\*Incomplete and/or unsigned form will not be accepted and Amatola Water reserves the right to contact any Client Company listed as a reference. Hand-written imprints on the stamp area will not be accepted. No letters will be accepted only attached forms will be considered.*

## FORM B.2: CONFIRMATION OF REFERENCES TO AMATOLA WATER

NAME OF BIDDING COMPANY:	
PREVIOUS CLIENT/EMPLOYER NAME:	
TENDER/BID NUMBER OF COMPLETED CONTRACT/PROJECT	
DESCRIPTION OF CONTRACT/ PROJECT COMPLETED	
VALUE OF WORK COMPLETED	
DURATION AND DATE COMPLETED:	

The above-mentioned Bidding Company is in the process of submitting a Bid/RFQ for **RFQ NO: 2195 - SUPPLY, DELIVERY OF A SURGE ANTICIPATION VALVE & INSTALLATION OF THE PIPEWORKS FOR NAHOON TREATMENT WORKS** for Amatola Water. If your company had prior exposure with the Bidding Company, as part of the evaluation process for this bid, Amatola Water requires your company to confirm goods/services supplied by the above Bidding Company as per below questionnaire.

<p>3. Were the goods/ services supplied according to the required quality as per the description/specification and were delivered on time?</p>	<p>Select applicable rating</p> <p><input type="checkbox"/> <b>Excellent,</b></p> <p><input type="checkbox"/> <b>Good,</b></p> <p><input type="checkbox"/> <b>Satisfactory,</b></p> <p><input type="checkbox"/> <b>Poor</b></p>
<p>4. Kindly, indicate their overall performance on the project.</p>	<p>Select applicable rating</p> <p><input type="checkbox"/> <b>Excellent,</b></p> <p><input type="checkbox"/> <b>Good,</b></p> <p><input type="checkbox"/> <b>Satisfactory,</b></p> <p><input type="checkbox"/> <b>Poor</b></p>

Full Name of Authorised Signatory .....

Contact Number ..... Email address.....

Signature..... Date.....

### \*CLIENT (EMPLOYER) STAMP HERE

**\*Incomplete and/or unsigned form will not be accepted and Amatola Water reserves the right to contact any Client Company listed as a reference. Hand-written imprints on the stamp area will not be accepted. No letters will be accepted only attached forms will be considered.**

**BIDDER'S DISCLOSURE****1. PURPOSE OF THE FORM**

Any person (natural or juristic) may make an offer or offers in terms of this invitation to bid. In line with the principles of transparency, accountability, impartiality, and ethics as enshrined in the Constitution of the Republic of South Africa and further expressed in various pieces of legislation, it is required for the bidder to make this declaration in respect of the details required hereunder.

Where a person/s are listed in the Register for Tender Defaulters and / or the List of Restricted Suppliers, that person will automatically be disqualified from the bid process.

**2. Bidder's declaration**

2.1 Is the bidder, or any of its directors / trustees / shareholders / members / partners or any person having a controlling interest<sup>1</sup> in the enterprise, employed by the state? **YES/NO**

2.1.1 If so, furnish particulars of the names, individual identity numbers, and, if applicable, state employee numbers of sole proprietor/ directors / trustees / shareholders / members/ partners or any person having a controlling interest in the enterprise, in table below.

Full Name	Identity Number	Name of State institution

2.2 Do you, or any person connected with the bidder, have a relationship with any person who is employed by the procuring institution? **YES/NO**

2.2.1 If so, furnish particulars:

.....  
 .....

2.3 Does the bidder or any of its directors / trustees / shareholders / members / partners or any person having a controlling interest in the enterprise have any interest in any other related enterprise whether or not they are bidding for this contract? **YES/NO**

2.3.1 If so, furnish particulars:

.....  
 .....

<sup>1</sup> the power, by one person or a group of persons holding the majority of the equity of an enterprise, alternatively, the person/s having the deciding vote or power to influence or to direct the course and decisions of the enterprise.

### 3 DECLARATION

I, the undersigned, (name)..... in submitting the accompanying bid, do hereby make the following statements that I certify to be true and complete in every respect:

- 3.1 I have read and I understand the contents of this disclosure;
- 3.2 I understand that the accompanying bid will be disqualified if this disclosure is found not to be true and complete in every respect;
- 3.3 The bidder has arrived at the accompanying bid independently from, and without consultation, communication, agreement or arrangement with any competitor. However, communication between partners in a joint venture or consortium<sup>2</sup> will not be construed as collusive bidding.
- 3.4 In addition, there have been no consultations, communications, agreements or arrangements with any competitor regarding the quality, quantity, specifications, prices, including methods, factors or formulas used to calculate prices, market allocation, the intention or decision to submit or not to submit the bid, bidding with the intention not to win the bid and conditions or delivery particulars of the products or services to which this bid invitation relates.
- 3.4 The terms of the accompanying bid have not been, and will not be, disclosed by the bidder, directly or indirectly, to any competitor, prior to the date and time of the official bid opening or of the awarding of the contract.
- 3.5 There have been no consultations, communications, agreements or arrangements made by the bidder with any official of the procuring institution in relation to this procurement process prior to and during the bidding process except to provide clarification on the bid submitted where so required by the institution; and the bidder was not involved in the drafting of the specifications or terms of reference for this bid.
- 3.6 I am aware that, in addition and without prejudice to any other remedy provided to combat any restrictive practices related to bids and contracts, bids that are suspicious will be reported to the Competition Commission for investigation and possible imposition of administrative penalties in terms of section 59 of the Competition Act No 89 of 1998 and or may be reported to the National Prosecuting Authority (NPA) for criminal investigation and or may be restricted from conducting business with the public sector for a period not exceeding ten (10) years in terms of the Prevention and Combating of Corrupt Activities Act No 12 of 2004 or any other applicable legislation.

I CERTIFY THAT THE INFORMATION FURNISHED IN PARAGRAPHS 1, 2 and 3 ABOVE IS CORRECT.

I ACCEPT THAT THE STATE MAY REJECT THE BID OR ACT AGAINST ME IN TERMS OF PARAGRAPH 6 OF PFMA SCM INSTRUCTION 03 OF 2021/22 ON PREVENTING AND COMBATING ABUSE IN THE SUPPLY CHAIN MANAGEMENT SYSTEM SHOULD THIS DECLARATION PROVE TO BE FALSE.

.....  
Signature

.....  
Date

.....  
Position

.....  
Name of bidder

---

<sup>2</sup> Joint venture or Consortium means an association of persons for the purpose of combining their expertise, property, capital, efforts, skill and knowledge in an activity for the execution of a contract.

## PREFERENCE POINTS CLAIM FORM IN TERMS OF THE PREFERENTIAL PROCUREMENT REGULATIONS 2017

This preference form must form part of all bids invited. It contains general information and serves as a claim form for preference points for Broad-Based Black Economic Empowerment (B-BBEE) Status Level of Contribution

**NB: BEFORE COMPLETING THIS FORM, BIDDERS MUST STUDY THE GENERAL CONDITIONS, DEFINITIONS AND DIRECTIVES APPLICABLE IN RESPECT OF B-BBEE, AS PRESCRIBED IN THE PREFERENTIAL PROCUREMENT REGULATIONS, 2017.**

### 1. GENERAL CONDITIONS

**1.1** The following preference point systems are applicable to all bids:

- the 80/20 system for requirements with a Rand value of up to R50 000 000 (all applicable taxes included); and
- the 90/10 system for requirements with a Rand value above R50 000 000 (all applicable taxes included).

**1.2** a) The value of this bid is estimated to be below R50 000 000 (all applicable taxes included) and therefore the .....**80/20**..... preference point system shall be applicable; or

b) The 80/20 preference point system will be applicable to this tender.

**1.3** Points for this bid shall be awarded for:

- (a) Price; and
- (b) B-BBEE Status Level of Contributor.

**1.4** The maximum points for this bid are allocated as follows:

	POINTS
<b>PRICE</b>	<b>80</b>
<b>B-BBEE STATUS LEVEL OF CONTRIBUTOR</b>	<b>20</b>
<b>Total points for Price and B-BBEE must not exceed</b>	<b>100</b>

**1.5** Failure on the part of a bidder to submit proof of B-BBEE Status level of contributor together with the bid, will be interpreted to mean that preference points for B-BBEE status level of contribution are not claimed.

**1.6** The purchaser reserves the right to require of a bidder, either before a bid is adjudicated or at any time subsequently, to substantiate any claim in regard to preferences, in any manner required by the purchaser.

### 2. DEFINITIONS

- (a) **“B-BBEE”** means broad-based black economic empowerment as defined in section 1 of the Broad-Based Black Economic Empowerment Act;
- (b) **“B-BBEE status level of contributor”** means the B-BBEE status of an entity in terms of a code of good practice on black economic empowerment, issued in terms of section 9(1) of the Broad-Based Black Economic Empowerment Act;

- (c) **“bid”** means a written offer in a prescribed or stipulated form in response to an invitation by an organ of state for the provision of goods or services, through price quotations, advertised competitive bidding processes or proposals;
- (d) **“Broad-Based Black Economic Empowerment Act”** means the Broad-Based Black Economic Empowerment Act, 2003 (Act No. 53 of 2003);
- (e) **“EME”** means an Exempted Micro Enterprise in terms of a code of good practice on black economic empowerment issued in terms of section 9 (1) of the Broad-Based Black Economic Empowerment Act;
- (f) **“functionality”** means the ability of a tenderer to provide goods or services in accordance with specifications as set out in the tender documents.
- (g) **“prices”** includes all applicable taxes less all unconditional discounts;
- (h) **“proof of B-BBEE status level of contributor”** means:
  - 1) B-BBEE Status level certificate issued by an authorized body or person;
  - 2) A sworn affidavit as prescribed by the B-BBEE Codes of Good Practice;
  - 3) Any other requirement prescribed in terms of the B-BBEE Act;
- (i) **“QSE”** means a qualifying small business enterprise in terms of a code of good practice on black economic empowerment issued in terms of section 9 (1) of the Broad-Based Black Economic Empowerment Act;
- (j) **“rand value”** means the total estimated value of a contract in Rand, calculated at the time of bid invitation, and includes all applicable taxes;

### 3. POINTS AWARDED FOR PRICE

#### 3.1 THE 80/20 PREFERENCE POINT SYSTEMS

A maximum of 80 points is allocated for price on the following basis:

**80/20**

$$P_s = 80 \left( 1 - \frac{P_t - P_{\min}}{P_{\min}} \right)$$

Where

P<sub>s</sub> = Points scored for price of bid under consideration

P<sub>t</sub> = Price of bid under consideration

P<sub>min</sub> = Price of lowest acceptable bid

### 4. POINTS AWARDED FOR B-BBEE STATUS LEVEL OF CONTRIBUTOR

- 4.1 In terms of Regulation 6 (2) and 7 (2) of the Preferential Procurement Regulations, preference points must be awarded to a bidder for attaining the B-BBEE status level of contribution in accordance with the table below:

B-BBEE Status Level of Contributor	Number of points (80/20 system)
1	20
2	18
3	14

4	12
5	8
6	6
7	4
8	2
Non-compliant contributor	0

## 5. BID DECLARATION

5.1 Bidders who claim points in respect of B-BBEE Status Level of Contribution must complete the following:

### 6. B-BBEE STATUS LEVEL OF CONTRIBUTOR CLAIMED IN TERMS OF PARAGRAPHS 1.4 AND 4.1

6.1 B-BBEE Status Level of Contributor: = ..... (maximum of 20 points)

(Points claimed in respect of paragraph 7.1 must be in accordance with the table reflected in paragraph 4.1 and must be substantiated by relevant proof of B-BBEE status level of contributor.

## 7. SUB-CONTRACTING

7.1 Will any portion of the contract be sub-contracted?

(*Tick applicable box*)

YES	<input type="checkbox"/>	NO	<input type="checkbox"/>
-----	--------------------------	----	--------------------------

7.1.1 If yes, indicate:

- i) What percentage of the contract will be subcontracted.....%
- ii) The name of the sub-contractor.....
- iii) The B-BBEE status level of the sub-contractor.....
- iv) Whether the sub-contractor is an EME or QSE

(*Tick applicable box*)

YES	<input type="checkbox"/>	NO	<input type="checkbox"/>
-----	--------------------------	----	--------------------------

- v) Specify, by ticking the appropriate box, if subcontracting with an enterprise in terms of Preferential Procurement Regulations, 2017:

Designated Group: An EME or QSE which is at least 51% owned by:	EME √	QSE √
Black people		
Black people who are youth		
Black people who are women		
Black people with disabilities		
Black people living in rural or underdeveloped areas or townships		
Cooperative owned by black people		
Black people who are military veterans		
<b>OR</b>		
Any EME		
Any QSE		



**8. DECLARATION WITH REGARD TO COMPANY/FIRM**

**8.1** Name of company/firm: .....

**8.2** VAT registration number: .....

**8.3** Company registration number: .....

**8.4** TYPE OF COMPANY/ FIRM

- ☐ Partnership/Joint Venture / Consortium
- ☐ One person business/sole propriety
- ☐ Close corporation
- ☐ Company
- ☐ (Pty) Limited

[TICK APPLICABLE BOX]

**8.5** DESCRIBE PRINCIPAL BUSINESS ACTIVITIES

.....  
.....  
.....  
.....

**8.6** COMPANY CLASSIFICATION

- ☐ Manufacturer
- ☐ Supplier
- ☐ Professional service provider
- ☐ Other service providers, e.g. transporter, etc.

[TICK APPLICABLE BOX]

**8.7** Total number of years the company/firm has been in business: .....

**8.8** I/we, the undersigned, who is / are duly authorised to do so on behalf of the company/firm, certify that the points claimed, based on the B-BBE status level of contributor indicated in paragraphs 1.4 and 6.1 of the foregoing certificate, qualifies the company/ firm for the preference(s) shown and I / we acknowledge that:

- i) The information furnished is true and correct;
- ii) The preference points claimed are in accordance with the General Conditions as indicated in paragraph 1 of this form;
- iii) In the event of a contract being awarded as a result of points claimed as shown in paragraphs 1.4 and 6.1, the contractor may be required to furnish documentary proof to the satisfaction of the purchaser that the claims are correct;
- iv) If the B-BBEE status level of contributor has been claimed or obtained on a fraudulent basis or any of the conditions of contract have not been fulfilled, the purchaser may, in addition to any other remedy it may have –

- (a) disqualify the person from the bidding process;

- (b) recover costs, losses or damages it has incurred or suffered as a result of that person's conduct;
- (c) cancel the contract and claim any damages which it has suffered as a result of having to make less favourable arrangements due to such cancellation;
- (d) recommend that the bidder or contractor, its shareholders and directors, or only the shareholders and directors who acted on a fraudulent basis, be restricted by the National Treasury from obtaining business from any organ of state for a period not exceeding 10 years, after the *audi alteram partem* (hear the other side) rule has been applied; and
- (e) forward the matter for criminal prosecution.

WITNESSES

1. ....

2. ....

.....  
SIGNATURE(S) OF BIDDERS(S)

DATE: .....

ADDRESS .....

.....

## DECLARATION CERTIFICATE FOR LOCAL PRODUCTION AND CONTENT

This standard document must form part of all tender. It contains general information and serves as a declaration form for local content (local production and local content are used interchangeably).

Before completing this declaration, tenderers must study the General Conditions, Definitions, Directives applicable in respect of Local Content as prescribed in the Preferential Procurement Regulations, 2017 and the South African Bureau of Standards (SABS) approved technical specification number SATS 1286:201x.

### 1. General Conditions

- 1.1. Preferential Procurement Regulations, 2017 (Regulation 8 and 12) make provision for the promotion of local production and content.
- 1.2. Regulation 8. prescribes that in the case of designated sectors, where in the award of tenders local production and content is of critical importance, such tenders must be advertised with the specific tendering condition that only locally produced goods, services or works or locally manufactured goods, with a stipulated minimum threshold for local production and content will be considered.
- 1.3. Regulation 8.(4) prescribes that where there is no designated sector, a specific tender condition may be included, that only locally produced services, works or goods or locally manufactured goods with a stipulated minimum threshold for local production and content, will be considered.
- 1.4. Where necessary, for tenders referred to in paragraphs 1.2 and 1.3 above, a two-stage tendering process may be followed, where the first stage involves a minimum threshold for local production and content and the second stage price and B-BBEE.
- 1.5. A person awarded a contract in relation to a designated sector, may not sub-contract in such a manner that the local production and content of the overall value of the contract is reduced to below the stipulated minimum threshold.
- 1.6. The local content (LC) as a percentage of the tender price must be calculated in accordance with the SABS approved technical specification number SATS 1286: 201x as follows:

$$LC = 1 - \left( \frac{x}{y} \right) \times 100$$

Where

x imported content

y tender price excluding value added tax (VAT)

Prices referred to in the determination of x must be converted to Rand (ZAR) by using the exchange rate published by South African Reserve Bank (SARB) at 12:00 on the date, one week (7 calendar days) prior to the closing date of the tender as indicated in paragraph 4.1 below.

**The SABS approved technical specification number SATS 1286:2011 is accessible on [http://www.thedti.gov.za/industrial development/ip.jsp](http://www.thedti.gov.za/industrial%20development/ip.jsp) at no cost.**

1.7. A tenderer will be disqualified if:

- (a) this Declaration Certificate and the Annex C (Local Content Declaration: Summary Schedule) are not submitted as part of the bid documentation; and
- (b) the bidder fails to declare that the Local Content Declaration Templates (Annex C, D and E) have been audited and certified as correct.

## 2. Definitions

- 2.1. **“tender”** includes advertised competitive offers, written price quotations or proposals;
- 2.2. **“tender price”** price offered by the tenderer, excluding value added tax (VAT);
- 2.3. **“contract”** means the agreement that results from the acceptance of a tender by an organ of state;
- 2.4. **“designated sector”** means a sector, sub-sector or industry that has been designated by the Department of Trade and Industry in line with national development and industrial policies for local production, where only locally produced services, works or goods or locally manufactured goods meet the stipulated minimum threshold for local production and content;
- 2.5. **“duly sign”** means a Declaration Certificate for Local Content that has been signed by the Chief Financial Officer or other legally responsible person nominated in writing by the Chief Executive, or senior member / person with management responsibility (close corporation, partnership or individual).
- 2.6. **“imported content”** means that portion of the tender price represented by the cost of components, parts or materials which have been or are still to be imported (whether by the supplier or its subcontractors) and which costs are inclusive of the costs abroad, plus freight and other direct importation costs, such as landing costs, dock duties, import duty, sales duty or other similar tax or duty at the South African port of entry;
- 2.7. **“local content”** means that portion of the tender price which is not included in the imported content, provided that local manufacture does take place;
- 2.8. **“stipulated minimum threshold”** means that portion of local production and content as determined by the Department of Trade and Industry; and
- 2.9. **“sub-contract”** means the primary contractor’s assigning, leasing, making out work to, or employing another person to support such primary contractor in the execution of part of a project in terms of the contract.

## 3. The stipulated minimum threshold(s) for local production and content for this tender is/are as follows:

<u>Description of services, works or goods</u>	<u>Stipulated minimum threshold</u>
Valve Products and Actuators	70%

- 4. Does any portion of the services, works or goods offered have any imported content?  
(Tick applicable box)

YES		NO	
-----	--	----	--

4.1 If yes, the rate(s) of exchange to be used in this tender to calculate the local content as prescribed in paragraph 1.6 of the general conditions must be the rate(s) published by SARB for the specific currency at 12:00 on the date, one week (7 calendar days) prior to the closing date of the tender.

The relevant rates of exchange information is accessible on [www.reservebank.co.za](http://www.reservebank.co.za).

Indicate the rate(s) of exchange against the appropriate currency in the table below (refer to Annex A of SATS 1286:2011):

Currency	Rates of exchange
US Dollar	
Pound Sterling	
Euro	
Yen	
Other	

NB: Tenderers must submit proof of the SARB rate (s) of exchange used.

5. Were the Local Content Declaration Templates (Annex C, D and E) audited and certified as correct?

(Tick applicable box)

YES		NO	
-----	--	----	--

5.1. If yes, provide the following particulars:

- (a) Full name of auditor: .....
- (b) Practice number: .....
- (c) Telephone and cell number: .....
- (d) Email address: .....

(Documentary proof regarding the declaration will, when required, be submitted to the satisfaction of the Accounting Officer / Accounting Authority)

6. Where, after the award of a bid, challenges are experienced in meeting the stipulated minimum threshold for local content the dti must be informed accordingly in order for the dti to verify and in consultation with the AO/AA provide directives in this regard.

**LOCAL CONTENT DECLARATION**  
**(REFER TO ANNEX B OF SATS 1286:2011)**

**LOCAL CONTENT DECLARATION BY CHIEF FINANCIAL OFFICER OR OTHER LEGALLY RESPONSIBLE PERSON NOMINATED IN WRITING BY THE CHIEF EXECUTIVE OR SENIOR MEMBER/PERSON WITH MANAGEMENT RESPONSIBILITY (CLOSE CORPORATION, PARTNERSHIP OR INDIVIDUAL)**

**IN RESPECT OF BID NO. ....**

**ISSUED BY:** (Procurement Authority / Name of Institution):

.....  
NB

1 The obligation to complete, duly sign and submit this declaration cannot be transferred to an external authorized representative, auditor or any other third party acting on behalf of the bidder.

2 Guidance on the Calculation of Local Content together with Local Content Declaration Templates (Annex C, D and E) is accessible on <http://www.thdti.gov.za/industrialdevelopment/ip.jsp>. Bidders should first complete Declaration D. After completing Declaration D, bidders should complete Declaration E and then consolidate the information on Declaration C. **Declaration C should be submitted with the bid documentation at the closing date and time of the bid in order to substantiate the declaration made in paragraph (c) below.** Declarations D and E should be kept by the bidders for verification purposes for a period of at least 5 years. The successful bidder is required to continuously update Declarations C, D and E with the actual values for the duration of the contract.

I, the undersigned, ..... (full names),  
do hereby declare, in my capacity as .....  
of .....(name of bidder entity),  
the following:

(a) The facts contained herein are within my own personal knowledge.

(b) I have satisfied myself that:

- (i) the goods/services/works to be delivered in terms of the above-specified bid comply with the minimum local content requirements as specified in the bid, and as measured in terms of SATS 1286:2011; and
- (ii) the declaration templates have been audited and certified to be correct.

(c) The local content percentage (%) indicated below has been calculated using the formula given in clause 3 of SATS 1286:2011, the rates of exchange indicated in paragraph 4.1 above and the information contained in Declaration D and E which has been consolidated in Declaration C:

Bid price, excluding VAT (y)	R
Imported content (x), as calculated in terms of SATS 1286:2011	R
Stipulated minimum threshold for local content (paragraph 3 above)	
Local content %, as calculated in terms of SATS 1286:2011	

**If the bid is for more than one product, the local content percentages for each product contained in Declaration C shall be used instead of the table above.**

**The local content percentages for each product has been calculated using the formula given in clause 3 of SATS 1286:2011, the rates of exchange indicated in paragraph 4.1 above and the information contained in Declaration D and E.**

(d) I accept that the Procurement Authority / Institution has the right to request that the local content be verified in terms of the requirements of SATS 1286:2011.

(e) I understand that the awarding of the bid is dependent on the accuracy of the information furnished in this application. I also understand that the submission of incorrect data, or data that are not verifiable as described in SATS 1286:2011, may result in the Procurement Authority / Institution imposing any or all of the remedies as provided for in Regulation 13 of the Preferential Procurement Regulations, 2011 promulgated under the Preferential Policy Framework Act (PPPFA), 2000 (Act No. 5 of 2000).

**SIGNATURE:** \_\_\_\_\_

**DATE:** \_\_\_\_\_

**WITNESS No. 1** \_\_\_\_\_

**DATE:** \_\_\_\_\_

**WITNESS No. 2** \_\_\_\_\_

**DATE:** \_\_\_\_\_

## Annex C

## Local Content Declaration - Summary Schedule

(C1) **Tender No.** RFI  
 (C2) **Tender description:** SUPPLY, DELIVERY & INSTALLATION OF A SURGE ANTICIPATION VALVE FOR NAHOON TREATMENT WORKS  
 (C3) **Designated product(s)** Valves products and actuators  
 (C4) **Tender Authority:** Amatola Water  
 (C5) **Tendering Entity name:**  
 (C6) **Tender Exchange Rate:** Pula  EU  GBP   
 (C7) **Specified local content %** 70%

**Note:** VAT to be excluded from all calculations

Calculation of local content								Tender summary			
Tender item no's	List of items	Tender price each (excl VAT)	Exempted imported value	Tender value net of exempted imported content	Imported value	Local value	Local content % (per item)	Tender Qty	Total tender value	Total exempted imported content	Total Imported content
(C8)	(C9)	(C10)	(C11)	(C12)	(C13)	(C14)	(C15)	(C16)	(C17)	(C18)	(C19)
4	Item P4. 150mm diameter Surge Anticipation Control Valve & Pipework PN40, Cast steel, off-line and hydraulically operated. "Bermad model 835-M" OEA or similar						70%	1			
								(C20) Total tender value			
								(C21) Total Exempt imported content			
								(C22) Total Tender value net of exempt imported content			
								(C23) Total Imported content			
								(C24) Total local content			
								(C25) Average local content % of tender			

Signature of tenderer from Annex B

\_\_\_\_\_

Date: \_\_\_\_\_



(D1)
(D2)
(D3)
(D4)
(D5)
(D6)

<b>Tender No.</b>	
<b>Tender description:</b>	
<b>Designated Products:</b>	
<b>Tender Authority:</b>	
<b>Tendering Entity name:</b>	
<b>Tender Exchange Rate:</b>	

**Note:** VAT to be excluded from all calculations

---

Pula

EU

R 9.00

GBP

R 12.00

### Calculation of imported content

## Summary

[illegible]

(D19) Total exempt imported value	R 0
-----------------------------------	-----

**This total must correspond with Annex C - C 21**

### Calculation of imported content

## Summary

[illegible]

(D32) Total imported value by tenderer	R 0
--	-----

### Calculation of imported content

## Summary

[illegible]

(D45) Total imported value by 3rd party	R 0
---	-----

### Calculation of foreign currency payments

### Summary of payments

Type of payment	Local supplier making the payment	Overseas beneficiary	Foreign currency value paid	Tender Rate of Exchange
(D46)	(D47)	(D48)	(D49)	(D50)

[illegible][illegible]

(D53) Total of imported content & foreign currency payments - (D32), (D45) & (D52) above	R 0
--	-----

Date:

**This total must correspond with  
Annex C - C 23**

## Annex E

## Local Content Declaration - Supporting Schedule to Annex C

(E1)	Tender No.					<b>Note:</b> VAT to be excluded from all calculations
(E2)	Tender description:					
(E3)	Designated products:					
(E4)	Tender Authority:					
(E5)	Tendering Entity name:					

Local Products (Goods, Services and Works)	Description of items purchased	Local suppliers	Value
	(E6)	(E7)	(E8)
	<b>(E9) Total local products (Goods, Services and Works)</b>		R 0
<b>Manpower costs</b>	( Tenderer's manpower cost)		R 0
<b>Factory overheads</b>	(Rental, depreciation & amortisation, utility costs, consumables etc.)		R 0
<b>Administration overheads and mark-up</b>	(Marketing, insurance, financing, interest etc.)		R 0
		<b>(E13) Total local content</b>	R 0
		<b>This total must correspond with Annex C - C24</b>	

**Signature of tenderer from Annex B**

Date:

## FUNCTIONALITY TABLE:

### Functionality evaluation

An assessment of Functionality will be based on the evaluation criteria noted in the table below. Each of the evaluation criteria in the table will carry a weighting as indicated, and the bidder will be required to score a minimum of **60** points (out of the 100 points), for Functionality in order to qualify and proceed to the next stage of the evaluation process.

### CRITERIA

The service provider is to meet the below criteria which is applicable to the bid to be submitted to the Amatola Water.

**Scoring Functionality - The allocation of the scoring criteria will be applied as follows:**

No.	EVALUATION CRITERIA	WEIGHTING	POINT SCORED
<b>1</b>	<b>Experience of Entity in the Sector (Please attach completion certificates stating duration of contracts of previous similar services)</b>	<b>40</b>	
	2 completion certificates of a steel pipeline with a minimum diameter of 150mm	<b>40</b>	
	1 completion certificates of a steel pipeline with a minimum diameter of 150mm	<b>20</b>	
	None	<b>0</b>	
<b>2</b>	<b>Service Team Skills (Please attach CV of the key personnel)</b>	<b>30</b>	
	Supervisor - 3 years' experience	<b>30</b>	
	Supervisor – 1-2 years' experience	<b>15</b>	
<b>4</b>	<b>Deliver Lead Time (of the SURGE VALVE specified)</b>	<b>30</b>	
	1-3 weeks	<b>30</b>	
	4-5 weeks	<b>20</b>	
	6 and above	<b>0</b>	
<b>Maximum possible score for quality</b>		<b>100</b>	
<b>Minimum number of total points required in order to move to phase 3</b>		<b>60</b>	

# **SECTION C:**

## **PRICING INSTRUCTIONS, PRICING SCHEDULE AND CONTRACT**

### **PRICE INSTRUCTIONS AND ESCALATION**

The following pricing schedules must be completed in full:

**SBD 3.1: Pricing Schedule: Firm prices**

**NB: If there are any unconditional discount offers, kindly attach a schedule that will indicate where those discounts are applied from.**

**Failure to fully complete the pricing instructions will invalidate your bid. All line items should be completed.**

**No claim in respect of any price escalation will be considered by the Amatola Water unless it is specifically stated in the Pricing Schedule that the Bid is subject to price escalation.**

**When escalation is claimed for during the contract period, proof of such escalation must be furnished and the calculation itself must be submitted to corroborate such proof. Escalation will only be calculated on the official index figures supplied by the Department of Statistics or the Price Controller, which ever may be applicable.**

**All orders placed will be based on the current Bid prices. It is the responsibility of the Bidder to inform Amatola Water of any escalation prior to implementation of the escalated price. Failure to do so will negate any such claims.**

### **VALUE ADDED TAX**

**In calculating the cost of the supply and delivery of services and / or material, the supplier will issue a "Tax Invoice" for all services rendered and / or materials supplied, which will reflect the exclusive cost of such services, goods or materials with the relevant Value Added Tax being added to the total.**

**VAT must be included in the Bid price but must be shown separately.**

**Non-VAT vendors must not include VAT in their bid price.**

**PRICING SCHEDULE – FIRM PRICES  
(PURCHASES)**

**NOTE: PRICE ADJUSTMENTS WILL BE ALLOWED AT THE PERIODS AND TIMES SPECIFIED IN THE BIDDING DOCUMENTS.**

**IN CASES WHERE DIFFERENT DELIVERY POINTS INFLUENCE THE PRICING, A SEPARATE PRICING SCHEDULE MUST BE SUBMITTED FOR EACH DELIVERY POINT**

Name of Bidder.....RFQ number....2195

Closing Time ...11:00am ..... Closing date: **12 December 2022**

**OFFER TO BE VALID FOR 90 DAYS FROM THE CLOSING DATE OF BID.**

**PRICING SCHEDULE**

# INSTALLATION OF THE SPOOL PIECE

# NAHOON RISING MAIN REPLACEMENT

Item No.	DESCRIPTION	UNIT	QUANTITY	RATE	AMOUNT
	<b><u>PIPEWORK REFURBISHMENT</u></b>				
	<i>Allow for all costs and expenses in connection with the following :- refer to drawing 1452-WAT-006</i>				
	<b>Connect into existing main. (supply and install all fittings, and all operations and materials necessary to complete connection to main of):</b>				
1	Investigation and taking of actual site measurements before proceeding to design, selection and manufacture of equipment in accordance with Detailed Specification and conditions of contract of any outstanding items.	Item	1		
2	Removal of the existing pipework, valves and fittings at the pump station outlet to the chamber and remove to stock.	Item	1		
3	<b>Item P2</b> -300mm diameter Special 29° MED,RAD,Bend GMS, 4.5mm wall thickness, both ends flanged to table 40/3 pipe C/Lleg lengths= 305=2300 <b>(PIPEWORK ALREADY ON SITE - TO BE VERIFIED FOR CORRECT MEASUREMENTS)</b>	Each	1		
4	<b>Item P4.</b> 150mm diameter Surge Anticipation Control Valve & Pipework PN40, Cast steel, off-line and hydraulically operated. "Bermad model 835-M" OEA or similar	Each	1		
5	Provisional Sum for All other Items not included above but which are nevertheless necessary to meet the Scope of Work and/or are required for the proper, safe and effective operation of the pipework	Sum	1		R 90 000,00
6	Provisional sum for scour valve roof, pipework for connection of scour outlet	PC Sum	1		R 40 000,00
<b>SUBTOTAL</b> <b>ADD 15% VALUE ADDED TAX</b> <b>FORM OF OFFER AMOUNT</b>					

## Note:

- Rates to be inclusive of delivery
- The appointed bidder to purchase the surge valve and after delivery and acceptance has been issued, a shutdown to be applied for

**Total must be transferred to SBD 1, failure to do so will lead to the RFQ being disqualified**

Required by:

Amatola Water

- At:

.....

- Brand and model

.....N/A.....

- Country of origin

.....N/A.....

- Does the offer comply with the specification(s)?

\*YES/NO

- If not to specification, indicate deviation(s)

.....

Period required for delivery

.....

Delivery:

**Firm**/not firm

## CONTRACT FORM - PURCHASE OF GOODS/WORKS

**THIS FORM MUST BE FILLED IN DUPLICATE BY BOTH THE SUCCESSFUL BIDDER (PART 1) AND THE PURCHASER (PART 2). BOTH FORMS MUST BE SIGNED IN THE ORIGINAL SO THAT THE SUCCESSFUL BIDDER AND THE PURCHASER WOULD BE IN POSSESSION OF ORIGINALLY SIGNED CONTRACTS FOR THEIR RESPECTIVE RECORDS.**

### PART 1 (TO BE FILLED IN BY THE SUPPLIER)

1. I hereby undertake to supply all or any of the goods and/or works described in the attached bidding documents to **(AMATOLA WATER) SUPPLY, DELIVERY OF A SURGE ANTICIPATION VALVE & INSTALLATION OF THE PIPEWORKS FOR NAHOON TREATMENT WORKS** in accordance with the requirements and specifications stipulated in **RFQ NUMBER 2195** at the price/s quoted. My offer/s remain binding upon me and open for acceptance by the purchaser during the validity period indicated and calculated from the closing time of bid.
2. The following documents shall be deemed to form and be read and construed as part of this agreement:
  - (i) Bidding documents, viz
    - Invitation to bid;
    - Tax clearance certificate;
    - Pricing schedule(s);
    - Technical Specification(s);
    - Preference claims for Broad Based Black Economic Empowerment Status Level of Contribution in terms of the Preferential Procurement Regulations 2017;
    - Declaration of interest;
    - Special Conditions of Contract;
  - (ii) General Conditions of Contract; and
  - (iii) Other (specify)
3. I confirm that I have satisfied myself as to the correctness and validity of my bid; that the price(s) and rate(s) quoted cover all the goods and/or works specified in the bidding documents; that the price(s) and rate(s) cover all my obligations and I accept that any mistakes regarding price(s) and rate(s) and calculations will be at my own risk.
4. I accept full responsibility for the proper execution and fulfilment of all obligations and conditions devolving on me under this agreement as the principal liable for the due fulfillment of this contract.
5. I declare that I have no participation in any collusive practices with any bidder or any other person regarding this or any other bid.
6. I confirm that I am duly authorised to sign this contract.

NAME (PRINT) .....

CAPACITY .....

SIGNATURE .....

NAME OF FIRM .....

DATE .....

#### WITNESSES

1. ....

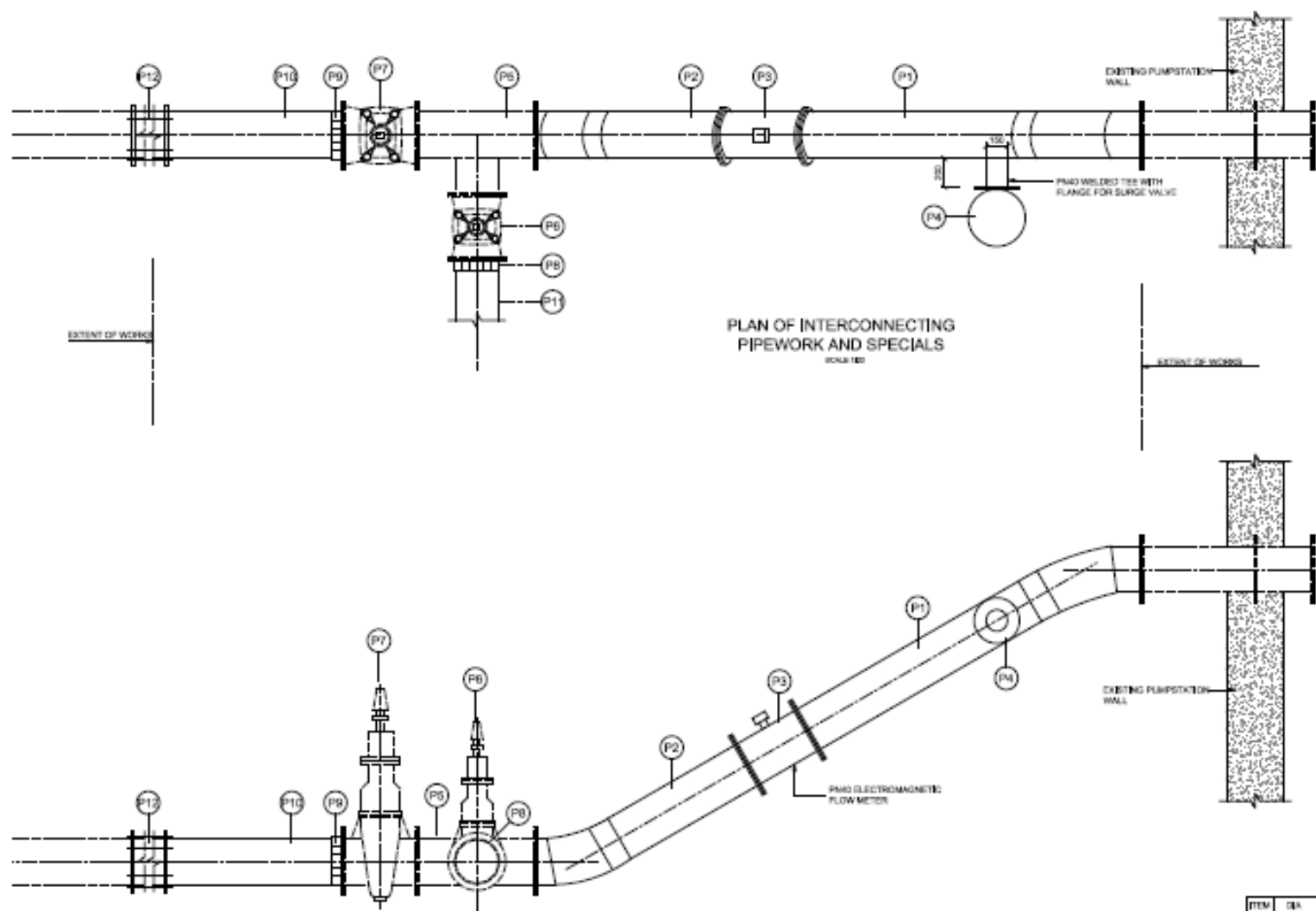
2. ....



## **GENERAL CONDITIONS OF CONTRACT**

The form of Contract to be utilized is the General Conditions of Contract issued by National Treasury.

DRAWINGS



SECTIONAL VIEW  
SCALE 1:50

PLAN OF INTERCONNECTING  
PIPEWORK AND SPECIALS  
SCALE 1:50

TABLE OF SPECIALS

ITEM NO.	QA (mm)	NO. OFF.	DESCRIPTION	PROTECTION	REMARK
P1	300	1	<b>SPECIAL 300 MM DIA. RISING MAIN CLASSED BRANCH</b> GMS, 4.5mm wall thickness, both ends flanged to 400, CA, length 300 x 1800	GMS and externally coated with "Densolite 807" flux, G.T.A.	
P2	300	1	<b>SPECIAL 300 MM DIA. RISING MAIN</b> GMS, 4.5mm wall thickness, both ends flanged to 400, CA, length 300 x 1300	GMS and externally coated with "Densolite 807" flux, G.T.A. Both pipes to be "Densolite" wrapped	Final length dependent on flow meter fitting
P3	300	1	<b>PM40 ELECTROMAGNETIC FLOW METER</b> PM40, 300 to 300 measurement range, "ADD Water Master" OCA	Per manufacturers specification	See Prov. Spec
P4	150	1	<b>SURGE ATTENUATING CONTROL VALVE &amp; PIPEWORK</b> PM40, Cast steel, 150 and hydraulically operated, "Barwad model 305-M" OCA	Valve & per manufacturers specification Discharge pipework - GMS	See Prov. Spec
P5	300 x 250	1	<b>ADAPTOR</b> Building GMS tee	Per manufacturers specification, both ends to be "Densolite" wrapped	Reuse existing
P6	250	1	<b>VALVE</b> Building wedge gate valve with gate box	Per manufacturers specification, both ends to be "Densolite" wrapped	Reuse existing
P7	300	1	<b>ADAPTOR</b> Building wedge gate valve with gate box	Per manufacturers specification, both ends to be "Densolite" wrapped	Reuse existing
P8	250	1	<b>ADAPTOR</b> PM40, "Barwad" Mechanical Isolated adapter (OCA) valve to 250mm dia pipe	Per manufacturers specification, both ends to be "Densolite" wrapped	
P9	300	1	<b>ADAPTOR</b> PM40, "Barwad" Mechanical Isolated adapter (OCA) valve to GMS pipe	Per manufacturers specification, both ends to be "Densolite" wrapped	
P10	300	1	<b>ADAPTOR</b> GMS, Length 300mm, 4.5mm wall thickness, Both ends flange ends	GMS, pipe, both ends to be "Densolite" wrapped	
P11	250	1	<b>ADAPTOR</b> Cast steel, 250mm, 150mm end	Per manufacturers specification	
P12	300	1	<b>ADAPTOR</b> PM40 Straight coupler for GMS	PM40, both ends to be "Densolite" wrapped	

No.	AMENDMENTS	DATE
P0	PRELIMINARY DRAWING	04/11/12
T0	ISSUED FOR TENDER	21/06/13
R0	ISSUED FOR CONSTRUCTION	28/10/13

GENERAL NOTES  
1. DIMENSIONS INDICATED ON DRAWINGS ARE ESTIMATED. ALL DIMENSIONS ARE TO BE VERIFIED ON SITE PRIOR TO ORDERING.  
2. DIMENSIONS ARE TO BE REPORTED TO THE ENGINEER IMMEDIATELY.  
3. DIMENSIONS ARE NOT TO BE SCALE.

DATE		
SURVEYED		
DRAWN	CB	09/2012
DESIGNED	CB	09/2012
CHECKED		
APPROVED		

**LUXHOB CONSULTING ENGINEERS (PTY) LTD**  
Kwa-Luhod  
Quarries Drive  
The Quarry  
Selborne  
5241  
P.O. Box 10354, Tloane  
Tel: (043) 721 1321  
Fax: (043) 721 1330  
Email: info@luxhob.co.za

**AMATOLA WATER**  
Logo of Amatola Water showing an elephant and the text "AMATOLA WATER" and "Water - Amato"

**NAHOON DAM RISING MAIN UPGRADE**

**PUMPSTATION PIPEWORK**

SCALE: 1:20  
DRAWING NO: 1452/WAT/006 R0  
ORIGINAL SHEET NO: A1