



Amatola
Water · Amanzi

bringing water to life

Seventh Edition • Dec 2017

Spillway

IN THIS ISSUE

01 EDITOR'S
NOTE

02 POSITIVE
RESULTS DESPITE
CHALLENGING YEAR

03 UNQUALIFIED AUDIT
LEADS MILESTONES
FOR 2016/17

05 GOOD NEWS AS
AMATOLA WATER'S
FINANCIALS GET
AG'S THUMBS UP

06 REPORT TO HELP
AMATOLA WATER
CRAFT NEW FUTURE

06 LANDMARK PROJECT
TO FOCUS ON PEOPLE

07 AMATOLA WATER
EXCEEDS ITS WATER
QUALITY TARGET

08 NEW SKILLS HELP
STAFF SOAR

13 THOUGHT STREAM:
WATER SCARCITY -
RETHINKING
WASTEWATER
RECYCLING, RE-USE

14 CUT WORKPLACE
WATER
CONSUMPTION WITH
THESE 6 TIPS

15 MOULDING BUFFALO
CITY'S NEXT EINSTEIN

16 IN BRIEF

PROJECTS

09 ORANGE RIVER
WATER SUPPLY TO
NELSON MANDELA
BAY TO DOUBLE

10 BILLION-RAND
INFRASTRUCTURE
FOR MTHATHA

11 AMATOLA WATER
HELPS SPEARHEAD
GROWTH FOR
MTHATHA

12 AMATOLA WATER
GETS TO WORK AT
SCHOOLS



EDITOR'S NOTE



THE FESTIVE SEASON IS A TIME FOR REFLECTION AND LOOKING FORWARD TO THE PROSPECTS OF A NEW YEAR. IN A SIMILAR VEIN, IN THIS EDITION WE LOOK BACK AT HOW AMATOLA WATER PERFORMED IN THE 2016/17 FINANCIAL YEAR WHICH ENDED IN JULY.



We provide you with a snapshot of the key highlights, which include, among others, an unqualified audit outcome as bestowed by the Auditor-General.

We also give you a run-down of key events that have shaped the year that was in the In-Brief section.

WATER SCARCITY IN SOUTH AFRICA

With most parts of South Africa like the City of Cape Town in the Western Cape and Nelson Mandela Bay in the Eastern Cape experiencing a severe drought, the severity of the water shortage in the country is inescapable.

This presents an opportunity to explore alternative water source options to ensure the country's better water security. Hence, we feature one of the main options being explored, namely wastewater re-use and recycling. The topic has dominated national and international water sector platforms, with many speakers advocating that it be explored along with other untapped opportunities.

BULK INFRASTRUCTURE PROJECTS

We also feature some of the bulk infrastructure projects that are geared to bring relief to the drought-ridden communities and revitalise water and sanitation infrastructure in the province. Amatola Water is helping the OR Tambo District Municipality improve its water and sanitation services delivery to almost one million citizens in Mthatha and surrounds as part of the R3,4 billion King Sabata Dalindyebo Presidential Intervention.

In Nelson Mandela Bay, phase three of the Nooitgedagt/Coega Low Level Scheme Bulk Water Supply Project will see its water supply from Orange River surge to more than double by June 2019.

GREAT AWARENESS NEEDED

On the other hand, the Eastern Cape Department of Education's Schools project is tackling bulk water and sanitation infrastructure at close on 200 schools throughout the Eastern Cape.

In order to ensure the sustainability of the above initiatives, behavioural change needs to be encouraged and is key to ensuring that communities continue to conserve water and use it sparingly. This includes instituting water-saving mechanisms to encourage conservation and greater awareness of prudent water use. This edition offers some measures you can implement in the workplace that encourage water conservation.

Connie Buso-Nina
COMMUNICATIONS MANAGER



WE VALUE YOUR FEEDBACK

Let us know what you think of Spillway and its content.
Send your comments to aw@amatolawater.co.za.

– POSITIVE RESULTS – DESPITE CHALLENGING YEAR



Nokulunga Mqeta
CHAIRPERSON OF AMATOLA WATER BOARD

“ Board efforts for the year 2016/17 were directed at restoring the organisation’s integrity, leadership stability and building stakeholder relationships says Amatola Water chairman Ntombokuqala Nokulunga Mqeta.

Ntombokuqala, who was appointed by the Minister of Water and Sanitation in 2016, says the year under review has been specifically challenging in the area of leadership, operations and for stakeholders and customers.

However, notwithstanding these challenges, Amatola Water achieved another unqualified audit.

In the coming year, Amatola Water will take on a number of organisational enhancing initiatives, so that it is strategically positioned to develop water infrastructure to improve the lives of its Eastern Cape communities.

“Access to water for our communities is paramount. Hence, our achievement of exceeding our SANS Class 1 potable water standard is a welcome reward for all at Amatola Water. Furthermore, we provided close to 100% of supply to our customers,” she explains.

This is due, in part, to the infrastructure projects which Amatola Water has undertaken as an implementing agent and its focus on plant management and operational efficiencies. These achievements have contributed to Amatola Water registering a 1% increase in revenues which totalled R405 million.

“As a result of these projects, there has been the creation of much needed jobs as well as support for small businesses.”

“Stakeholder partnerships remain paramount to advancing service delivery. In pursuit of our five-year objective to increase the contribution to economic transformation and improve the overall Amatola Water image, the organisation conducted several stakeholder engagements to improve relations, promote transparency and improve payment for water supplied to our clients. We have made progress and are confident further progress will be made,” she ends.

4-POINT PLAN: TOWARDS A SUSTAINABLE ORGANISATION

Amatola Water chairman Ntombokuqala Nokulunga Mqeta says that Amatola Water’s revitalisation process to position it as a regional bulk water and sanitation utility in the province, will include:

1

an organisational
review

2

strengthening of
project management

3

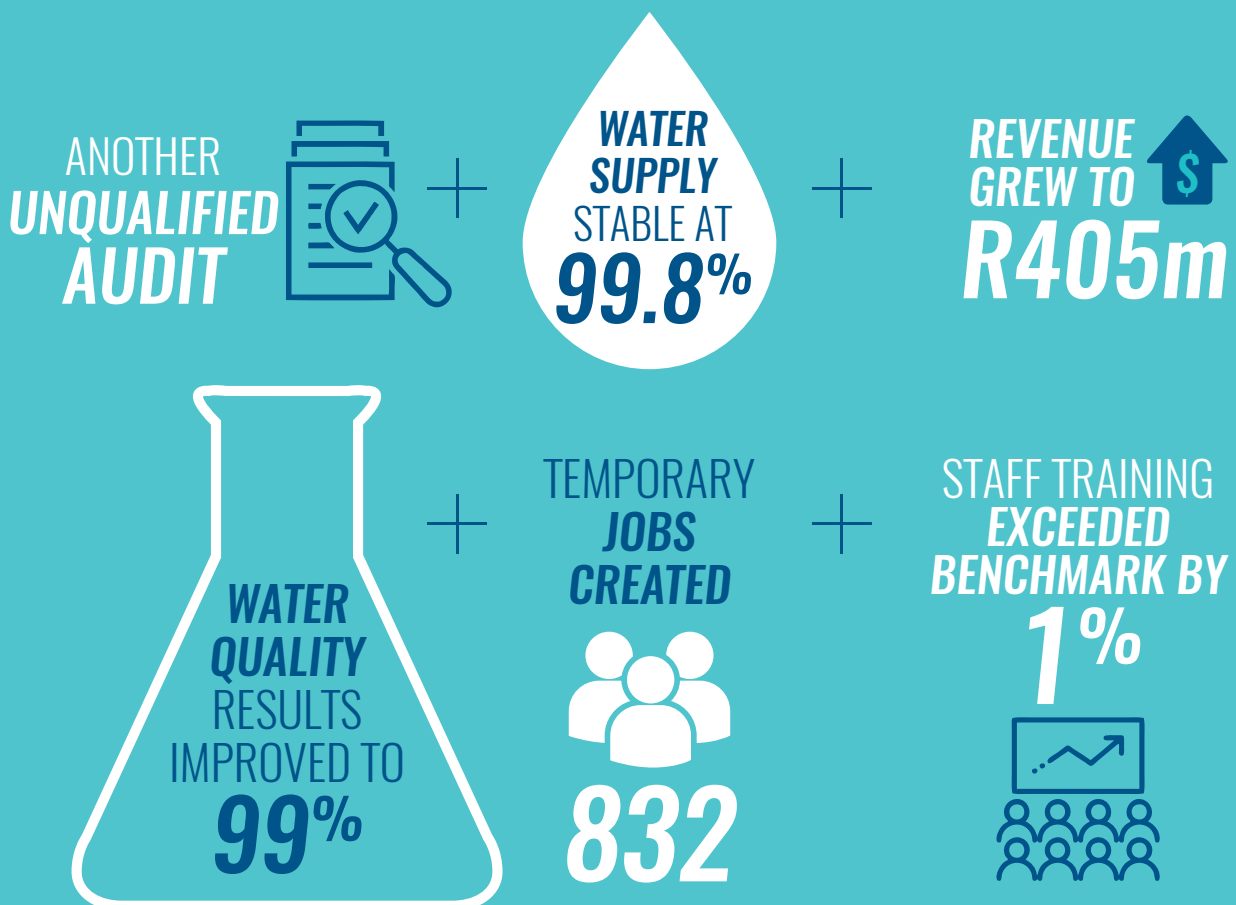
focus on
business growth

4

focused engagement
with stakeholders

— UNQUALIFIED AUDIT — LEADS MILESTONES FOR 2016/17

AMATOLA WATER'S SATISFACTORY SET OF RESULTS IN ITS PERFORMANCE AREAS, IS NOTABLE, CONSIDERING THE SIGNIFICANT CHALLENGES WHICH THE ORGANISATION FACED, SAYS ASANDA GIDANA WHO WAS APPOINTED AS ACTING CEO IN AUGUST THIS YEAR.





UNQUALIFIED AUDIT

Among the notable milestones is continued revenue growth which rose to R405 million from the previous year, Amatola Water also received its unqualified audit, as awarded by the Auditor-General.



WATER QUALITY STABLE

During the past financial year, Amatola Water also achieved a 99,8% assurance of supply against its 98% target. Five water treatment plants are currently being upgraded. These are Sandile, Masincedane, Binfield, Debe and Peddie.



WATER PRODUCTION QUALITY IMPROVES

Other pleasing milestones include the continued supply of water to Eastern Cape stakeholders, as measured by the SANS 241: 2015 which rose to 99%. This result is particularly encouraging since our plants are being upgraded and are still running at design capacity.



CAPITAL INFRASTRUCTURE PROJECTS IMPLEMENTED

Another milestone is that Amatola Water has been instrumental in changing the lives of our people in our province's small towns and rural areas. We have done this through our role as implementing partner for capital infrastructure projects worth close to R1 billion (R907 million).



TEMPORARY JOBS CREATED UP

It is encouraging that we were able to create 832 much-needed jobs, albeit temporary, in the areas where we implemented our projects. Furthermore, this result was achieved against a target of 600.

It is also worth noting that the percentage spend with 50% black owned companies was 105% which exceeded the target of 85%.



PEOPLE'S SKILLS GREW

In the last financial year, Amatola Water invested 2% of its gross turnover in skills development programmes.

This sizeable investment is a result of understanding that our people are essential to our organisation's delivery of services. To do this effectively, we need people who are committed to this endeavour. Part of our commitment to helping our people to better execute their roles is to provide more opportunities for skills development and in particular, through their training plans.

THE CHALLENGES

These are not insignificant achievements considering the challenges which included high staff turnover at a leadership level, lack of financial resources for expansion and capital projects, among others.

THE FUTURE

In the coming year, additional focus will be given to enhancing the organisation's sustainability, and in particular, stakeholder relationships and organisational optimisation. This plan will be done by way of the turnaround strategy which is well underway, the fruits of which stakeholders will soon see evidenced throughout the organisation.

As our trusted stakeholder, I thank you for your continued objective feedback and support which has allowed us to focus on being a trusted partner in building a stronger province and improving the lives of our people.

GOOD NEWS AS AMATOLA WATER'S FINANCIALS *GET AG'S THUMBS UP*

THE FIRST AUDIT OF AMATOLA WATER FINANCIALS BY THE AUDITOR-GENERAL (AG), SOUTH AFRICA'S SUPREME AUDIT INSTITUTION, HAS BEEN GIVEN THE ALL-CLEAR.



Asanda Gidana
ACTING CEO OF AMATOLA WATER

Amatola Water received an unqualified audit opinion from the Auditor-General for the 2016/17 financial year.

According to the AG's report which assures oversight, accountability and governance, "the financial statements present a true and fair view, in all material aspects, of the financial position of the Amatola Water Board as at 30 June 2017."

"We are pleased that we have once again achieved an unqualified audit opinion which has been sustained from the previous years and further cements the organisation's prudent financial management and commitment to sound corporate governance," says acting CEO Asanda Gidana.

"However, certain issues of concern were raised to provide improved assurance for the organisation," says Asanda.

In the year's report, the AG highlights only one "matter of emphasis" which relates to irregular expenditure of close to R189 million which had accumulated over a few years, had not been recovered, and had been written off or condoned. Only R79,4 million irregular spend was incurred in 2016/17.

The report also highlighted revenue management, internal control deficiencies and effective monitoring as some of the areas of improvement for Amatola Water.

"The AG's report has provided us with useful information and guidance on how to improve the areas of concern. We are committed to taking the necessary steps to have these addressed and ensure that we have effective systems and internal controls in place in order to improve organisational efficiency for next year," Asanda ends.

REPORT TO HELP AMATOLA WATER *CRAFT NEW FUTURE*

As part of its turnaround plan, Amatola Water is in the process of finalising a landmark diagnostic report which has made a thorough assessment of the water utility's operations.

The assessment, which began in October this year with the assistance of a specialist team, will form the foundation for the future direction of the organisation.

Acting CEO Asanda Gidana says that the report will help to guide the revitalisation process of the water utility that aims to be the leading regional water bulk water service provider in the Eastern Cape.

"The report will detail areas of special focus for Amatola Water, as well as guide us on how best to implement priority interventions such as the organisational review, strengthening project management and execution, business growth, and focused stakeholder engagement, which aim to ensure that Amatola Water is geared to deliver on its mandate.

"The findings of the report will be shared with our stakeholders because it is the first step in Amatola Water's journey to addressing the key challenges which the organisation has faced," she says.

LANDMARK PROJECT TO FOCUS ON PEOPLE

**AMATOLA WATER LOOKS
TO FORGE AHEAD WITH A
TURNAROUND PLAN, WHICH
FOCUSSES ON THE WATER
UTILITY'S NUMBER ONE
ASSET, ITS PEOPLE.**

This pioneering project, which will result in optimal efficiency through its employees, is set to kick off in December 2017 and will take about seven months.

This plan will help to maximise organisational efficiency by bringing about changes in the organisational structure, staff roles and responsibility.

The intention of the plan is to ensure that the correct people are placed in the correct positions based on qualifications, experience and skills. Staff development will be applied where competency gaps are identified.

As part of the plan, Amatola Water will also be implementing a change strategy that will drive a shift in organisational culture.

The turnaround plan includes three components:

- ① An in-depth analysis of the core units and culture, and their impacts on implementing Amatola Water's strategy
- ② Identification of the structures, roles and responsibilities to help Amatola Water perform better
- ③ Assessments of the current people resources for improved effectiveness.

AMATOLA WATER

EXCEEDS ITS WATER QUALITY TARGET

Amatola Water has put in a world-class performance for water quality by exceeding its target of 98% with a score of 99% for the financial year of 2016/17.

The score for water quality is achieved when Amatola Water produces bulk drinking water and wastewater in compliance with statutory requirements and consistent with customer needs.

WATER QUALITY TARGET OF 98%
EXCEEDED
WITH A SCORE OF
99%

THE WATER UTILITY OPERATES:

11 PLANTS

7 SUB-REGIONAL DISTRIBUTION NETWORKS

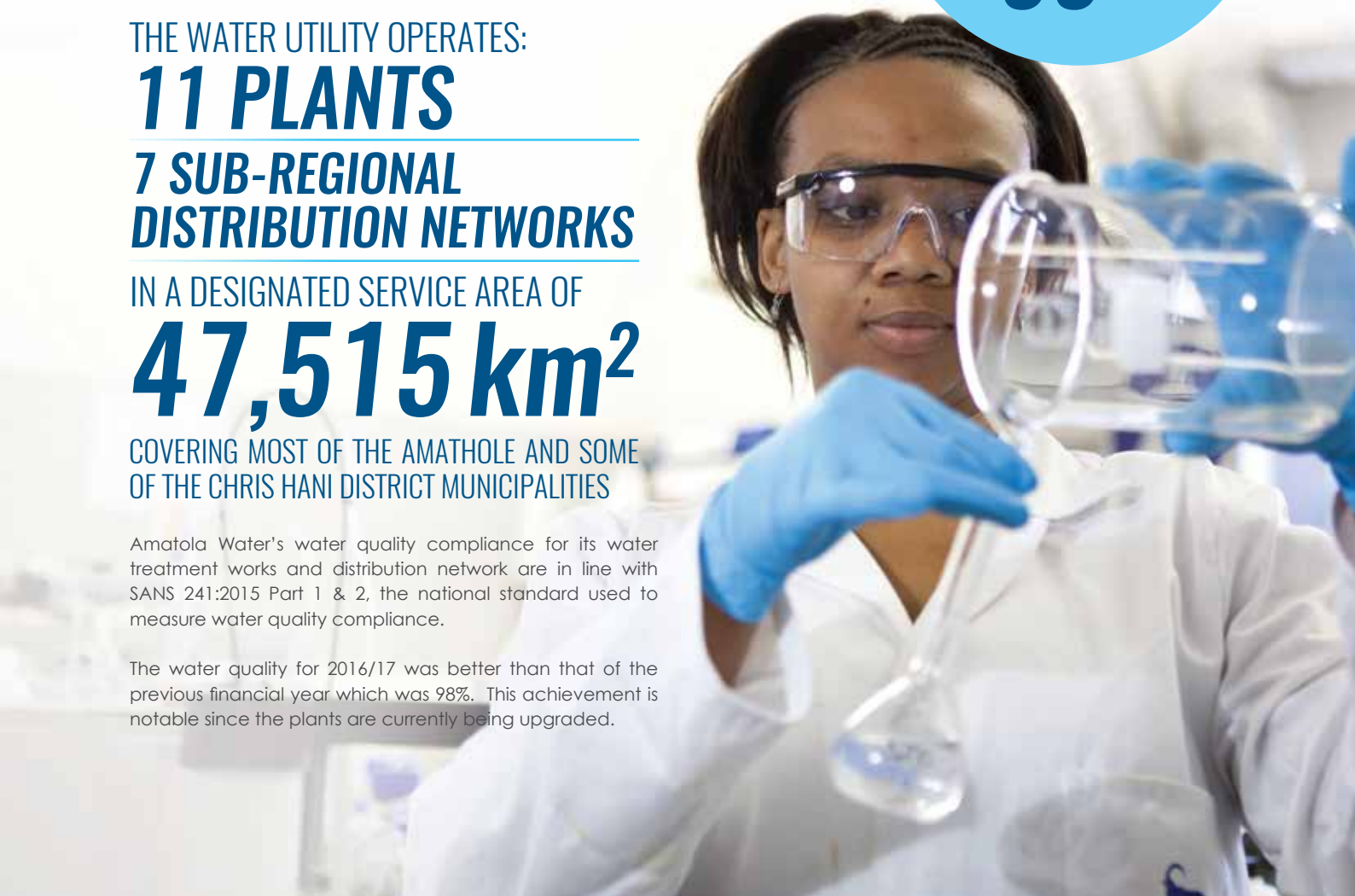
IN A DESIGNATED SERVICE AREA OF

47,515 km²

COVERING MOST OF THE AMATHOLE AND SOME OF THE CHRIS HANI DISTRICT MUNICIPALITIES

Amatola Water's water quality compliance for its water treatment works and distribution network are in line with SANS 241:2015 Part 1 & 2, the national standard used to measure water quality compliance.

The water quality for 2016/17 was better than that of the previous financial year which was 98%. This achievement is notable since the plants are currently being upgraded.



NEW SKILLS HELP STAFF SOAR

AMATOLA WATER IS PUTTING THE SPOTLIGHT ON SKILLS DEVELOPMENT, WITH TRAINING PLANS AIMED AT ASSISTING YOUNG PROFESSIONALS TO FURTHER THEIR STUDIES.

This is according to Asanda Gidana, acting CEO, in the Amatola Water's latest annual report.

She says that in the past financial year, more than 10% of trained employees benefited from financial assistance for tertiary education. Fifteen of the employees were female.

Amatola Water's holistic view of skills development is essential to helping employees to excel. It applies this ethos to every tier of the organisation.

For example, Amatola Water has a Recognition for Prior Learning (RPL) Programme which saw three artisan aids qualify as electricians including the organisation's first female artisan to qualify.

In addition to financial support, Amatola Water offered a management development programme and project management certificate training. In the last financial year, 10 supervisors graduated from the management development programme - six of whom were women.



ORANGE RIVER WATER SUPPLY

TO NELSON MANDELA BAY TO DOUBLE

THE THIRD PHASE
OF THE R279M
AUGMENTATION SCHEME
(NOOITGEDAGT/COEGA LOW
LEVEL SCHEME) CURRENTLY
IMPLEMENTED BY AMATOLA
WATER INCLUDES 3 PARTS

The construction of the
45Ml Olifantskop reservoir

Construction a 70 Ml/d
treatment module at the
Nooitgedagt WTW

Rehabilitation of existing 7km
Missionvale steel pipeline

Nelson Mandela Bay Municipality will see its water supply from Orange River surge to more than double by June 2019 when Amatola Water completes the third-phase of the extensions to Nooitgedagt Water Treatment Works (WTW) in Addo.

The project, which began in earnest with the official handover of the site in May 2017, is making good progress.

Already, the excavation works at the Olifantskop reservoir site are 80% complete; at the Nooitgedagt WTW site, completed excavation stands at 90%.

The project is expected to be completed in March 2019.

The Nooitgedagt/Coega Low Level Scheme is a key augmentation project for the bulk water supply system of Nelson Mandela Bay Municipality. The municipality currently supplies potable water to some 1.23 million consumers and industries.



— BILLION RAND —

INFRASTRUCTURE FOR MTHATHA

Amatola Water is assisting the OR Tambo District Municipality to significantly improve its water and sanitation delivery to almost one million citizens in Mthatha and surrounds. The appointment forms part of the R3.4 billion King Sabata Dalindyebo Presidential Intervention, which includes a bulk water supply scheme in Mthatha, Libode, Ngqeleni, Nqadu and Mqanduli, as well bulk sanitation for Mthatha.

THE BULK WATER PROJECT IS MADE UP OF SIX CORRIDORS:

- Raw water pipeline and the Thornhill Water Treatment Works (WTW) Upgrade
- Mthatha South Corridor
- Mqanduli Corridor
- Rosedale to Libode Corridor
- Ngqeleni Corridor
- Signal Hill to Airport Corridor.

Once completed, Amatola Water, as the programme implementing agent, would have managed the construction of primary bulk infrastructure that includes:

- 227km of pipelines
- 30 large reservoirs
- 11 pump stations
- The upgrade of Thornhill WTW from 60MI/day to 115MI/day
- The construction of the new 50MI/day Highbury/Rosedale Waterworks.

The proposed regional bulk water scheme will be fed from two water treatment works:

- The proposed Highbury Waterworks will supply the Mthatha Northern Areas, Nqadu, Libode and Ngqeleni corridors
- The upgraded Thornhill WTW will supply central Mthatha, the western areas (the airport, Bedford hospital, military base, Southern areas and Viedgesville to Mqanduli corridor).

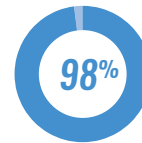
The secondary bulk infrastructure will include 300km of pipelines linking the primary bulk infrastructure to existing local schemes.

Funding for the project has come from the Municipal Infrastructure Grant and the Regional Bulk Infrastructure Grant (RBIG), with the Department of Water & Sanitation (DWS) as the RBIG funder.

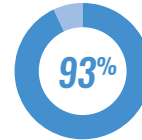
PROJECT PROGRESS



RAW WATER PIPELINE AND THE THORNHILL WTW UPGRADE



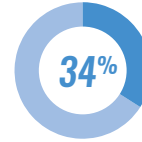
MTHATHA SOUTH CORRIDOR



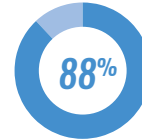
MQANDULI CORRIDOR



ROSEDALE TO LIBODE CORRIDOR



NGQELENI CORRIDOR



SIGNAL HILL TO AIRPORT CORRIDOR

ABOUT THE MTHATHA WATER AND SANITATION PRESIDENTIAL INITIATIVE

AIM

To uplift the economic development of the Greater Mthatha area.

WHAT'S THE PLAN?

To maximise the use of the currently under-utilised yield from the Mthatha Dam; regional scheme to encompass five strategic development corridors within 30km to 40km from Mthatha town; existing small schemes will be refurbished (where practical) and will augment the regional scheme.

WHY?

A regional water supply system will provide the necessary stability and assurance of supply in Mthatha and along the corridors that meaningful economic development requires.

AMATOLA WATER HELPS SPEARHEAD GROWTH FOR MTHATHA

Amatola Water is spearheading the upgrade, refurbishment and development of two of Mthatha's sanitation infrastructure sites.

The water utility was appointed as implementing agent for the multi-million rand upgrades which forms part of the presidential intervention for King Sabata Dalindyebo Municipality.

The initiative forms part of the masterplan to uplift the economic development of the Greater Mthatha area which continues to show good growth.

It aims to maximise the use of the currently under-utilised yield from the Mthatha Dam and Mthatha's surrounding towns through five strategic development corridors within 30km to 40km from Mthatha.

These include Libode, Ngqeleni, Nqadu, Mqanduli and the airport corridor and will serve just over one million people.

The bulk sanitation upgrade forms part of a larger project which includes several new reservoirs.

The bulk sanitation infrastructure upgrade will ensure environmental integrity of the Mthatha River and human health in the higher density urban areas of Mthatha.



FACT FILE

PROJECT 1: MTHATHA WASTE WATER TREATMENT WORKS (WWTW) UPGRADE

PERIOD: 2013/14

WHAT'S NEW: Works capacity grew from 12Ml/day to 18Ml/day; construction of the new 50Ml intake works.

VALUE: R43.4million (Phase 1); R179 million (Phase 2)

FUNDERS: Municipal Infrastructure Grant and Regional Bulk Infrastructure Grant

OTHER: Now the Mthatha WWTW has a capacity of 32Ml/day which is sufficient for the Mthatha town and surroundings existing infrastructure and the 21,000 houses planned by 2019.

PROJECT 2: MTHATHA NORTHERN OUTFALL SEWER

PERIOD: 2017/18

WHAT'S NEW: Sewer extended by 7.4km; new pump station which is already operational

VALUE: R193 709 707 (Gravity Mains); R138 845 319 (Pump Station and rising mains)

FUNDERS: Municipal Infrastructure Grant and Regional Bulk Infrastructure Grant

OTHER: The project is 99% complete. Planned completion is set for the end of this current financial year upon the resolution of the land claims which have posed a delay.



AMATOLA WATER GETS TO WORK AT SCHOOLS

AMATOLA WATER IS TACKLING THE BULK WATER AND SANITATION INFRASTRUCTURE AT CLOSE ON 200 SCHOOLS THROUGHOUT THE EASTERN CAPE.

Appointed by the Eastern Cape Department of Education (ECDoE), Amatola is the department's sole implementing partner for its bulk water and sanitation infrastructure in the province.

The project, which has run over two years, comprises of two phases:

PHASE 1 includes the repair of the dilapidated infrastructure of special schools and hostels for the water and sanitation.

PHASE 2 will concentrate on the Operation and Maintenance (O&M) of these schools.

In the current year, Amatola Water began work at 122

public ordinary schools of which 19 include hostels. The work completed to date has been valued at over R21 million.

A further 10 special schools have also been included in the plan. The work this year also included addressing water emergencies at nine priority (emergency) schools.

Amatola Water has appointed full-time process controllers and general workers at the various schools to oversee operations and maintenance so as to ensure good water and effluent quality.

In the current financial year, over 500 jobs have been created through the programme, 50 of which went to women.



THOUGHT Stream

WITH SAZILE QWELEKA



WATER SCARCITY: RETHINKING WASTEWATER RECYCLING, RE-USE

Dam levels in the Eastern Cape have been steadily declining, despite the recent rains that have added some needed relief to our water resources.

According to a recent report by the Department of Water and Sanitation, the total storage of water in the Eastern Cape stands at 56.1%, compared to last year's average levels of 66.4%.



This trend, coupled with the severe drought conditions that are affecting most parts of the country, an increasing population and industrial growth, and environmental degradation, we are forced to look at accelerated innovations in water resources and water services delivery to sustainably meet future water demands.

In her budget speech in May, the Minister of Water and Sanitation, Nomvula Mokonyane highlighted the country's heavy reliance on surface water as a concern.

She added that it was for this reason that the Department was planning to ensure that there is mix of surface and ground water, which includes options such as groundwater, wastewater re-use (grey water); desalination and rainwater harvesting, among others.

Recycling, the re-use of waste water (grey water) and desalination are some of buzz words in the water sector nationally and internationally, having been publicised as possible solutions to alleviating the effects of the persisting water scarcity.

Wastewater re-use, recycled or reclaimed or grey water refers to former wastewater that has been treated to remove solids and certain impurities, and then re-used for a variety of applications including landscaping and irrigation, for example.

Although costly, many coastal cities appear to prefer desalination as a solution to the water crisis.

However, unlike its desalination counterpart, an added advantage of wastewater recycling and re-use is that it requires far less electricity, and affords both economic and environmental benefits to those who embrace it.

In our quest for innovative ways to ensure sustainable water supply, perhaps it is opportune to start dealing with wastewater differently and explore wastewater re-use and recycling as a resource rather than waste and as a way to expand the country's pool of water resources.

Leading the cities in this area is Durban, which is home to the country's first private wastewater recycling plant. The idea for the plant was borne in 1993 out of concern for the area's increasing demand and limited water resources. This plant was later commissioned in 2001.

The plant treats 47.5 million litres of domestic and industrial wastewater to 'a near potable standard' for sale to industrial customers, with the added benefit of a lower tariff when compared to the normal tariff for potable water.

As a result, the plant has helped to free up sufficient drinking water for approximately 300 000 people in the area. In turn, this has reduced the demand for potable water and the quantity of effluent that is returned to the environment.

Due mainly to the persistent drought conditions and groundwater depletion, non-potable uses are increasing.

Using Durban as a success story of how wastewater recycling and re-use can be managed and used, it is clear that the future of water sustainability lies in looking at sources of water that will not only mitigate the effects of the drought, but also complement the existing sources.

Sazile Qweleka is Amatola Water's Operations Optimisation Manager.

CUT WORKPLACE WATER CONSUMPTION WITH THESE 6 TIPS

CUT COSTS, COMPLY WITH ENVIRONMENTAL LEGISLATION, REDUCE YOUR CARBON FOOTPRINT, IMPROVE YOUR COMPANY'S ENVIRONMENTAL PERFORMANCE AND GENERATE POSITIVE PR.

These are just some of benefits of conserving water at work. Organisations can follow these simple tips to become more water wise:



EDUCATION

Educate your employees on the importance and practices of water efficiency. Try and set water usage targets and encourage widespread involvement to achieve this.



BE VIGILANT

Monitor your water meters or water and to ensure your pipes are not leaking. If your water usage is unexpectedly large, you might have a leaking pipe or dripping tap. Leaking pipes or taps should be fixed immediately as a dripping tap can waste as much as 60 litres per day or 1,800 litres per month.



BATHROOM HACKS

Waterless urinals and automatic taps are examples of water efficient devices that may be installed in bathrooms to decrease unnecessary water usage. Waterless taps or fitting existing taps with aerators can reduce water flow from 20 - 30 litres to 6 - 10 litres per minute.



EFFICIENT DEVICES

Automatic taps and water efficient settings on kitchen appliances such as pressurised coffee machines, water-wise baseline dishwashers, can help to reduce water consumption. These are sometimes more expensive, but pay for themselves over time.



HARVEST RAINWATER

Harvest rainwater and determine where your wasted water is going and if or how you can recycle it in other areas of your business.



INDIGENOUS IS BEST

Indigenous drought-tolerant plants are preferable to thirstier alien plants. Properly maintain and configure your irrigation system, and disable it if there's rain. A more affordable option to consider is a greywater system and use rainwater for watering your plants.

— MOULDING BUFFALO CITY'S — *NEXT EINSTEIN*

AROUND 2,500 LEARNERS FROM HIGH SCHOOLS IN BUFFALO CITY'S MDANTSANE AREA ATTENDED A CAREER DAY GEARED TOWARDS PROVIDING A COMPREHENSIVE INTRODUCTION TO CAREERS IN MATHS AND SCIENCE.

The day, which was held in East London, provided resources to help core subject maths and science learners make the leap from high school to higher learning Institutions and finally the workplace.

The event effectively demonstrates Amatola Water's ethos of supporting the advancement of all communities where its operations are located.

The philosophy is embedded in the water utility's corporate social responsibility programmes.

In addition to focus on education, Amatola Water is involved in social and community engagement initiatives that promote awareness in the areas of sanitation, poverty alleviation, water conservation.

Amatola Water prioritises initiatives in historically disadvantaged communities.

It also sponsors bottled water for school and community sporting programmes.

Furthermore, over the past year, Amatola Water engaged with various communities in the Ndlambe, Makana and OR Tambo districts on issues of water conservation, sanitation, tours of treatment plants and other educational issues.



IN BRIEF

SANITATION MONTH AWARENESS AT BUFFALO CITY SCHOOL

Amatola Water, in partnership with the Buffalo City Metropolitan Municipality and the Department of Water and Sanitation, embarked on a sanitation month awareness campaign at Pefferville Primary School in East London in May 2017, to promote good sanitation, health and hygiene habits.

Amatola Water assisted the school with leak repairs, fixing sewer blockages, and replacing toilet seats with the aim of improving the condition of the school's ablution facilities.

Bulk bags of toilet paper, liquid hand-wash and other cleaning materials were also handed over to the school to ensure good sanitation was practised.



MTHATHA RIVER GETS CLEANED UP IN MANDELA MONTH

Amatola Water joined hands with the Department of Water and Sanitation, OR Tambo District Municipality, King Sabata Dalindyebo Local Municipality and Coca Cola Beverages to clean Mthatha River on Mandela Day. The clean-up formed part of the Clear Rivers Campaign to safeguard the country's water resources including rivers, streams, wetlands and other water ecosystems against pollution.

Speaking at the event, the Deputy Minister for the Department of Water and Sanitation, Pamela Tshwete, urged the participants to keep rivers and other natural resources clean, as some communities depend on them as a source of their drinking water.



SPOTLIGHT ON BEST INDUSTRY PRACTICES FOR WATER PROCESS CONTROLLERS

Amatola Water, in partnership with the Wisa Eastern Cape, held the region's first-ever workshop targeting local process controllers. The workshop took place in Somerset East in September and was attended by over 175 water sector experts, stakeholders and process controllers from various water service authorities and water service providers based in the Eastern Cape.

According to Amatola Water Plant Superintendent and Wisa Management Committee member, Francois van Staden, the workshop, which is the first of others to follow, was borne from a successful regional Wisa Open Day, which was held at the VW



Pavilion in Uitenhage in December last year.

"The aim of the workshop was to equip process controllers with the knowledge and practical skills necessary for the efficient operation and maintenance of small water treatment plants. It will ensure that they operate the treatment works in line with the best industry practices," he explains.

PRAYER SESSION COMMEMORATES WOMEN'S MONTH

In celebration of Women's Month, Amatola Water held an inter-faith prayer session at Nahoon Dam.

Led by acting CEO, Asanda Gidana and Interim Corporate Services Director, Jo Dalbock, the prayer session sought to bring healing for the challenges facing Amatola Water.

In support of the theme for the day – "Amatola Water women taking a stand and making a statement" - more than 100 women gathered on the day, and prayed for divine counsel in the various leadership and operational areas of the organisation.



OUTREACH AND DONATIONS FOR MANDELA DAY

As part of the Mandela Day commemoration activities, Amatola Water staff spent their 67 minutes at Pefferville Primary School in Buffalo City to help paint the school's ablution facilities.

Leading up to the day, Amatola Water ran an underwear and sanitary towels donation drive for the less fortunate children at the school. The collected items, as part of the donation drive, were handed to the school.



NTONTELA THEMBUKAZI WATER PROJECT IN LUSIKISIKI LAUNCHES



Department of Water and Sanitation's Deputy Minister, Pamela Tshwete, in partnership with OR Tambo District Municipality, Ngquzu Hill Local Municipality, Port St Johns Local Municipality, together with Amatola Water as the implementing agent, launched the Ntontela Thembukazi Water Project in June 2017.

The project, which was launched at kwaNgcoya Great Place in Lusikisiki, helps address the lack of proper water infrastructure in the area.

The R4, 4 million project will ensure that more than 5 344 households from the Ngquzu Hill and Port St Johns local municipalities receive much needed access to water supply.

As part of the project handover, six 5000 litre Rain Water Harvesting tanks and 200 buckets were donated to the elderly, physically challenged and the less fortunate.



bringing water to life

HEAD OFFICE

Amatola House,
6 Lancaster Road, Vincent, 5247
Tel 043 707 3700
aw@amatolawater.co.za

PUBLISHED BY

Amatola Water Board
Amatola House,
6 Lancaster Road, Vincent, 5247

ENQUIRIES

Communications Department
Amatola Water Board
Telephone: 043 707 3700
Fax: 043 707 3701
www.amatolawater.co.za

